

Extra-Housepit Excavation 1

M. Greene

To determine what kind of activity areas might occur outside housepits, a test trench was excavated on the relatively level ground between HP's 6, 7, and 10. This was EHPE 1 (this Volume, Preface, Fig. 1). The trench, 4 m north to south by 50 cm, was excavated in arbitrary 10 cm levels. The excavation levels were contoured to the general slope of the ground.

Square A

At a depth of 30 cm in Square A the remains of a roasting pit (Feature 1) were recovered (**Fig. 1**). This feature consists of a tight concentration of large cobbles (15–20 cm) and fire-cracked rock. It extends to 40 cm below the surface (BS) and occupies 60 cm of the southern end of Square A and 30 cm of the northern end of Square B. The soil was a dark loam mixed with charcoal. Five and a half buckets of FCR were removed from Feature 1. The debitage had been heat treated, evidenced through heat spalls. There were no tools or bones found associated with the feature. Thus, it appears to have been used for roasting roots or other plant materials. The northern half of Square A was devoid of cultural material at 35 cm BS. The size of the feature was estimated to be 60 cm north to south and 50–80 cm east to west, based on the concentration of rock in the wall profiles.

Feature 1 was capped over with fill in Square A, and the depression was later used as a hearth. In this level are fire reddened soil, and a small concentration of FCR. Specks of charcoal and fragments of burnt and calcified bone were found in the south-west corner of Square A. The hearth extended to 16 cm BS. A small portion of this stain extended into Square B.

Square B

The southern 80 cm of Square B contained the remains of a housepit rim deposit (Strata XIII) at 30 cm. This overlaid Feature 1 and contained both a Plateau, (at 12 cm BS) and a Kamloops (at 10 cm BS) projectile point. The artifacts from the southern half of trench-B were associated with the rim of HP 7. A charcoal sample for C¹⁴ dating was collected from Level 3, at 25 cm BS, in Strata XIII. This charcoal may represent discarded roof beams from the housepit. Also recovered were small mammal long bone fragments, one-third bucket load of FCR, and birch bark rolls. Strata XIII was characterized by a dense concentration of pea-sized gravels and hydrophobic soil.

Sterile soil was reached at 50 cm BS in Square B. A 50 cm wide test hole was sunk in the south end of Square B continuing below the rim deposit. At 60 cm, the test was below the rim deposit and into Strata XV. Artifacts were recovered 75 cm BS. Hard packed sterile soil was reached at 80 cm BS.

Summary and Conclusions

In summary, Squares A and B contained an initial occupation, a roasting pit feature, which predates the most recent (Kamloops) housepit occupation. The depression was capped by a later hearth in Level 1, in Square A, possibly contemporaneous with the Kamloops occupation. Late rim deposits were deposited over Feature 1, at 20 cm BS in Square B, which is associated with the Kamloops occupations.

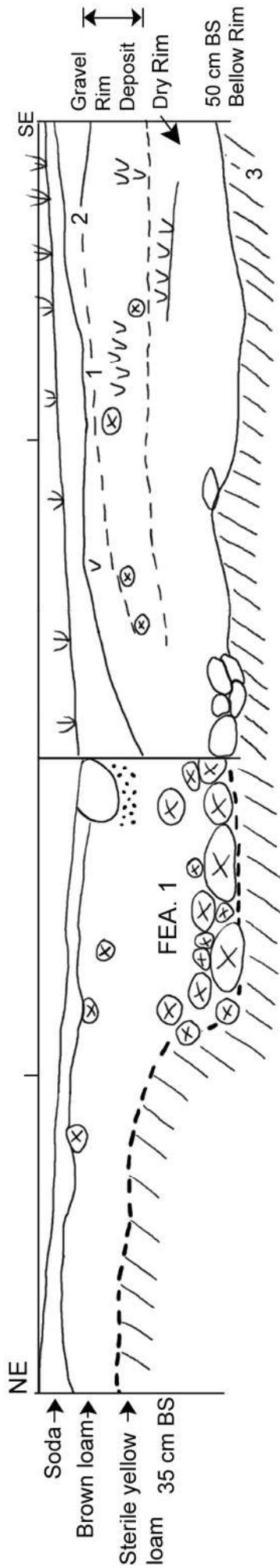
Figures

Figure 1: Cross-section and plan view of EHPE 1 showing the roasting pit associated with HP 7.

Figure 1. Cross-section and plan view of EHPE 1 showing the roasting pit associated with HP 7.

- 1 Plateau Point - 12 cm BS
- 2 Kamloops Point - Estimated Position
- 3 Chert biface

EHPE 1



0 50
scale in cm

WEST FACING WALL UNIT A

UNIT B

