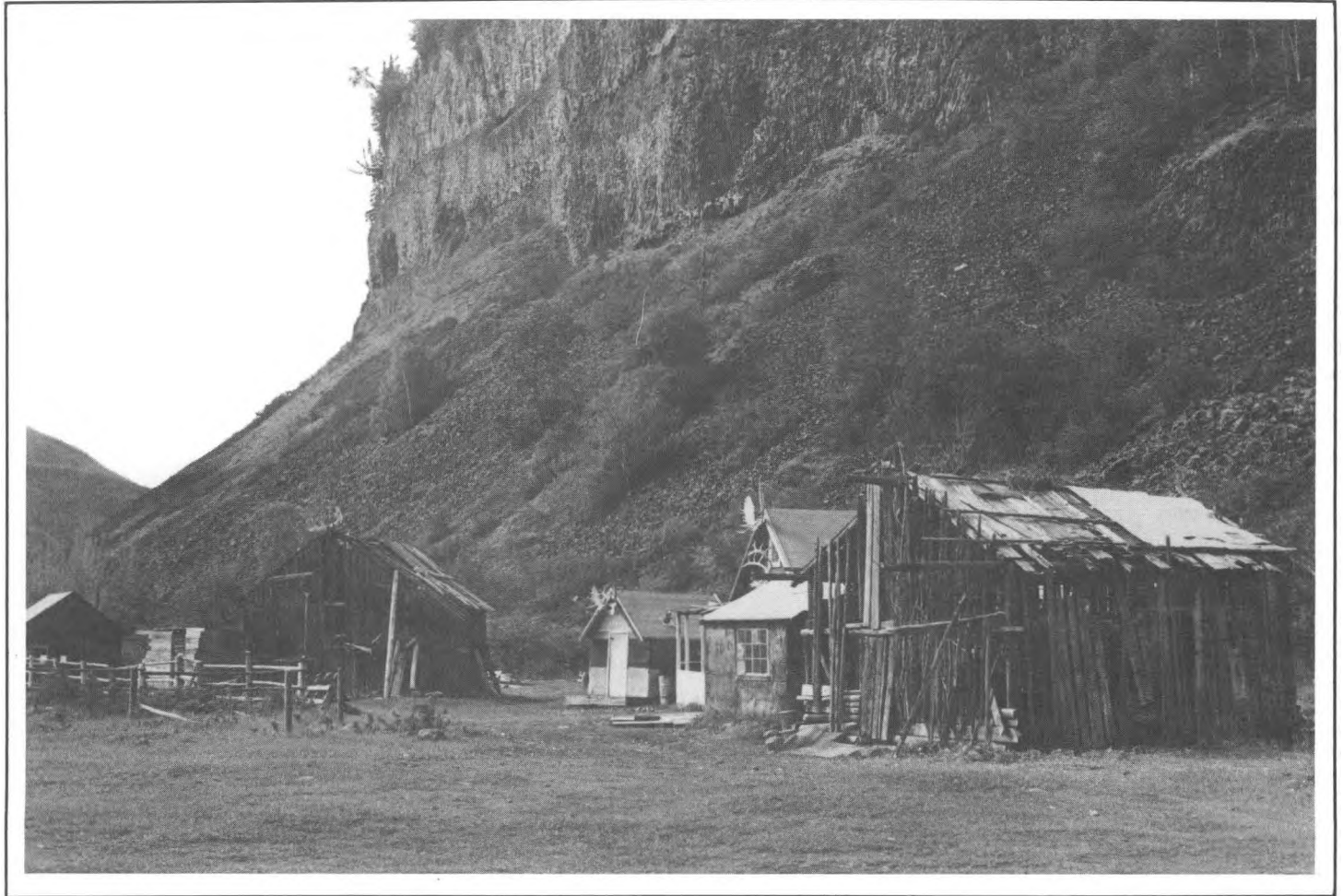


Tahltan Ethnoarchaeology



Sylvia L. Albright

Department of Archaeology
Simon Fraser University
Publication Number 15
1984

DEPARTMENT OF ARCHAEOLOGY

PUBLICATIONS COMMITTEE

Roy L. Carlson (Chairman)

Knut R. Fladmark

Philip M. Hobler

Jack D. Nance

Erle Nelson

The Department of Archaeology publishes papers and monographs which relate to its teaching and research interests. Communications concerning publications should be directed to the Chairman of the Publications Committee.

© Copyright 19 84
Department of Archaeology
Simon Fraser University

All rights reserved. No part of this publication may be reproduced or transmitted in any form or by any means, electronic or mechanical, including photocopying, recording or any information storage and retrieval system, without permission in writing from the publisher.

ISBN 0-86491-044-4

Cover Photo: Fishing camp at Tahltan-Stikine Confluence.
All photographs, including cover, by S. Albright

Tahltan Ethnoarchaeology

by

Sylvia L. Albright

Department of Archaeology
Simon Fraser University
Burnaby, British Columbia

Publication Number 15
1984