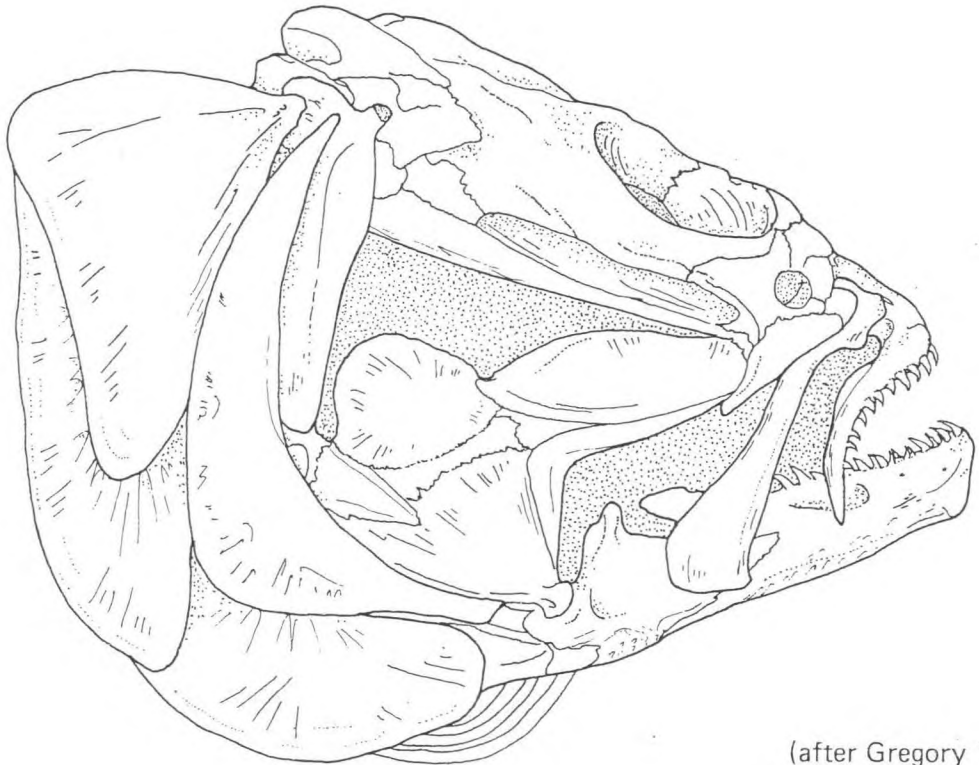
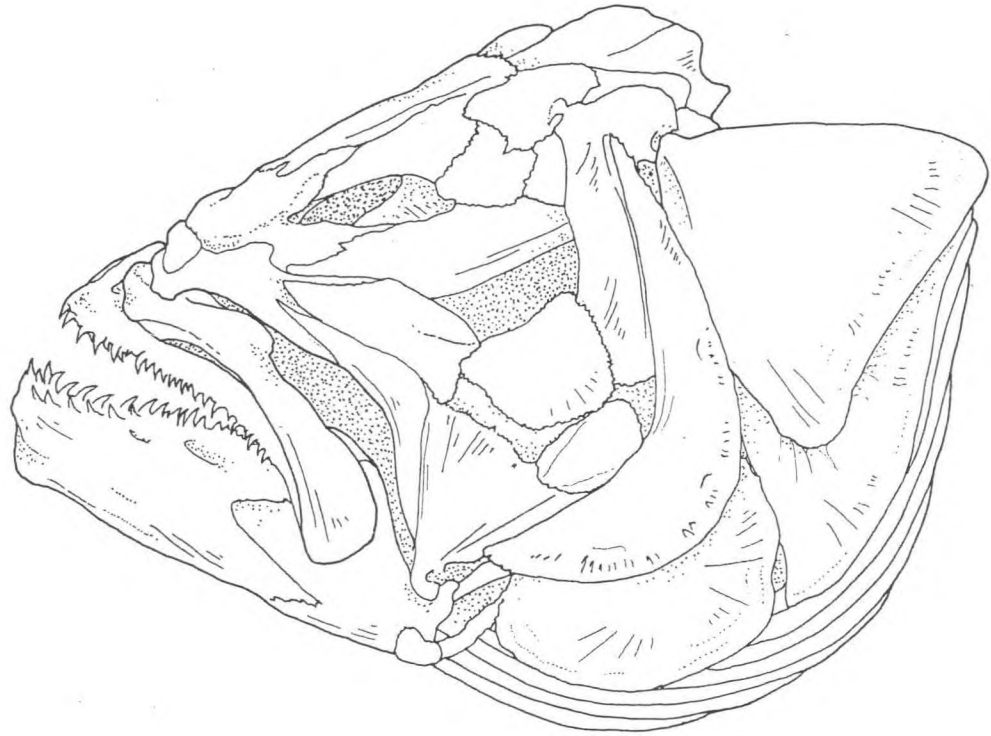


FAMILY PLEURONECTIDAE

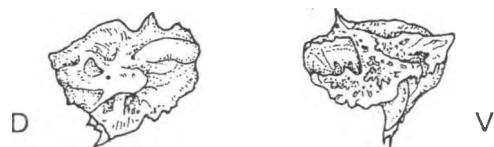


(after Gregory 1933)

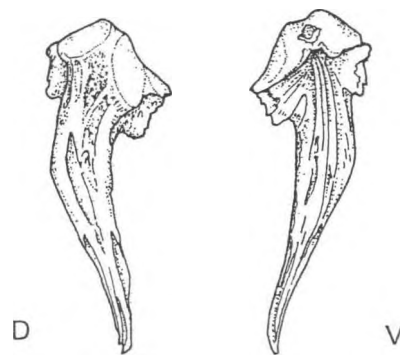


PLEURONECTIDAE *Hippoglossus stenolepis*

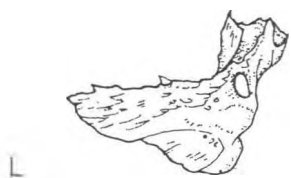
OLFACTORY REGION



Ethmoid



Vomer



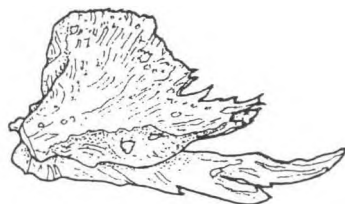
L

right



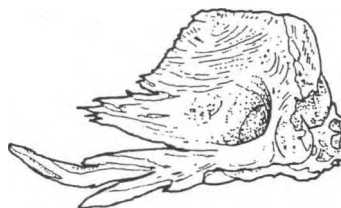
M

Prefrontal



L

left



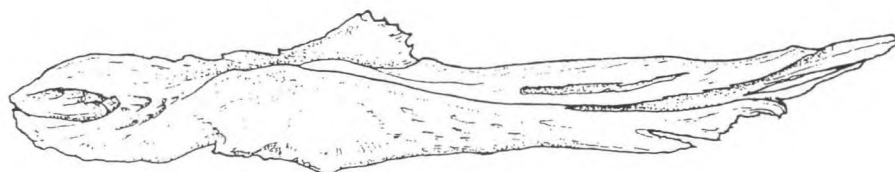
M

PLEURONECTIDAE *Hippoglossus stenolepis*

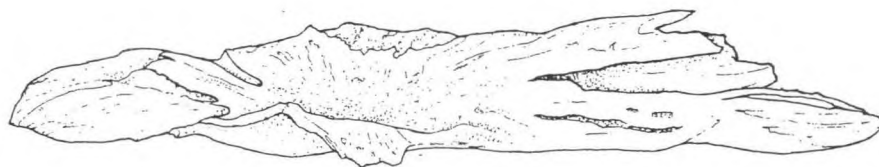
ORBITAL REGION



Alisphenoid



D

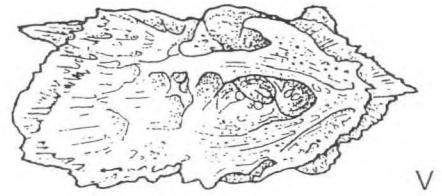
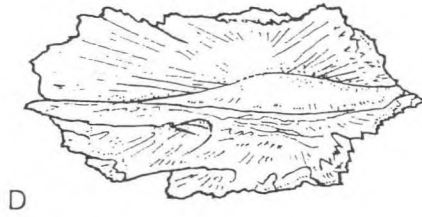


V

Parasphenoid

PLEURONECTIDAE *Hippoglossus stenolepis*

OCCIPITAL REGION



Supraoccipital

from larger specimen - *Hippoglossus stenolepis* (b)



right

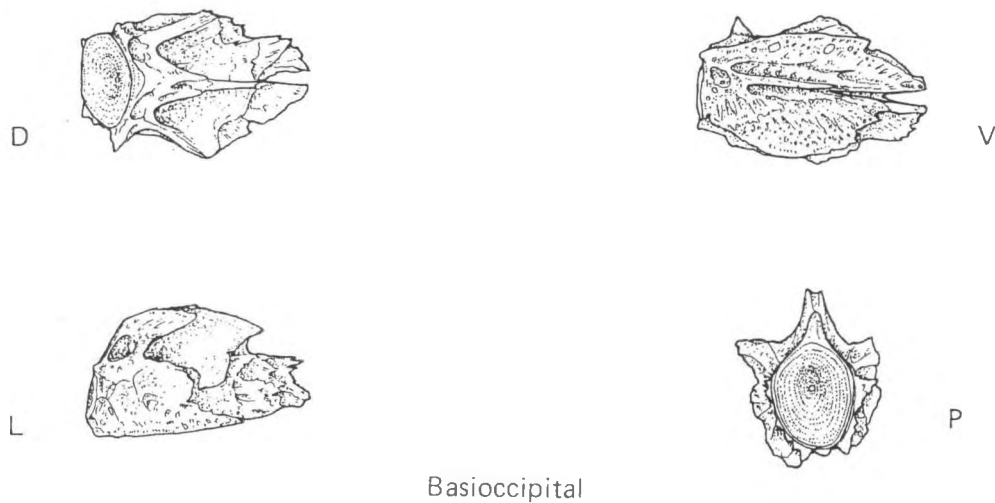
Exoccipital



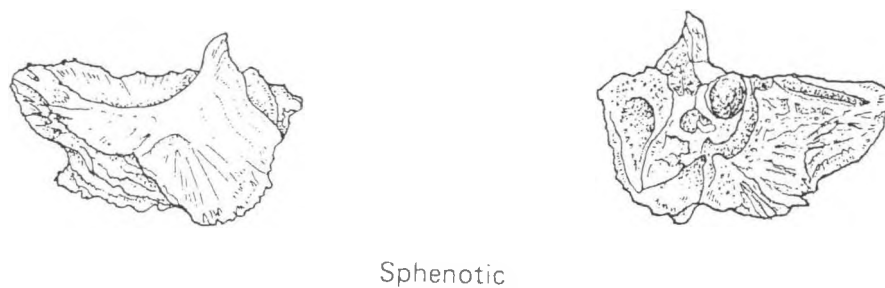
left

PLEURONECTIDAE *Hippoglossus stenolepis*

OCCIPITAL REGION



OTIC REGION



from larger specimen - *Hippoglossus stenolepis* (b)

PLEURONECTIDAE *Hippoglossus stenolepis*

OTIC REGION



Pterotic



right



left

Opisthotic



right



left

Epiotic

PLEURONECTIDAE *Hippoglossus stenolepis*

OTIC REGION



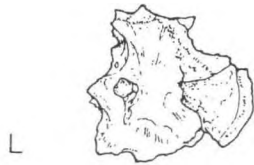
L

right



M

Prootic



L

left



M



right



Otolith

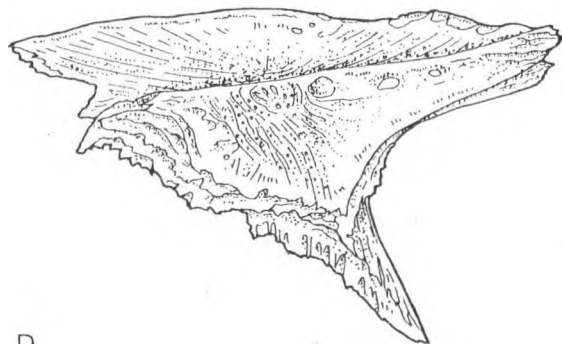


left



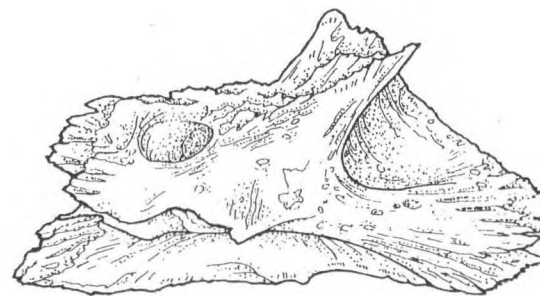
PLEURONECTIDAE *Hippoglossus stenolepis*

INVESTING BONES



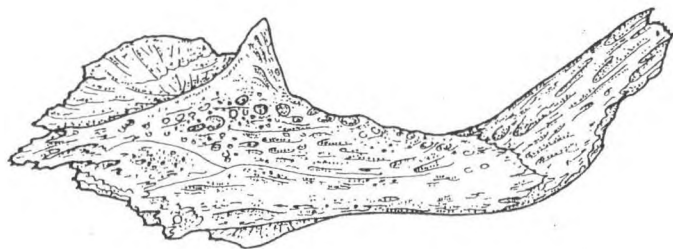
D

left



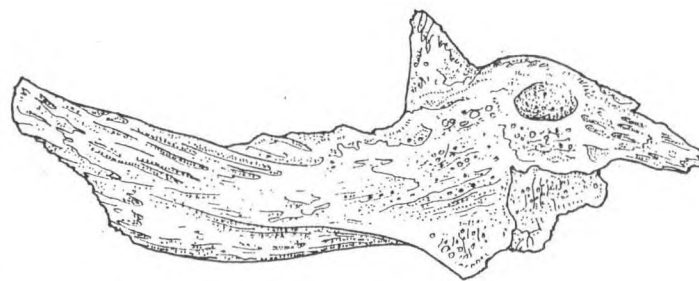
V

Frontal



D

right



V

from larger specimen - *Hippoglossus stenolepis* (b)

PLEURONECTIDAE *Hippoglossus stenolepis*
INVESTING BONES



L



M

Nasal



right



Parietal

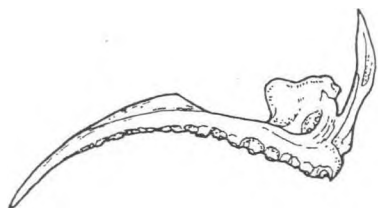


left

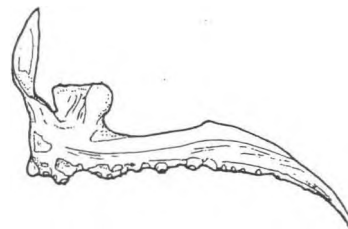


PLEURONECTIDAE *Hippoglossus stenolepis*

LATERAL SKULL BONES

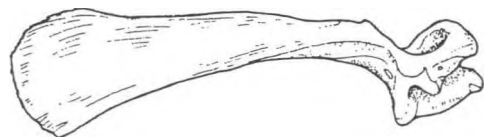


L

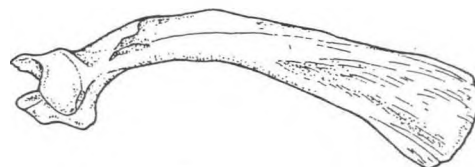


M

Premaxilla

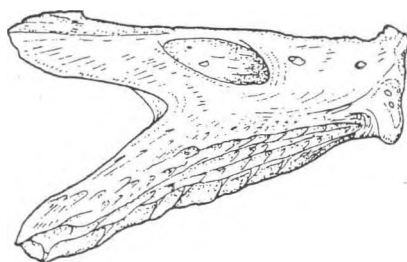


L

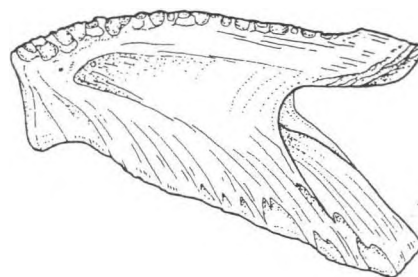


M

Maxilla



L

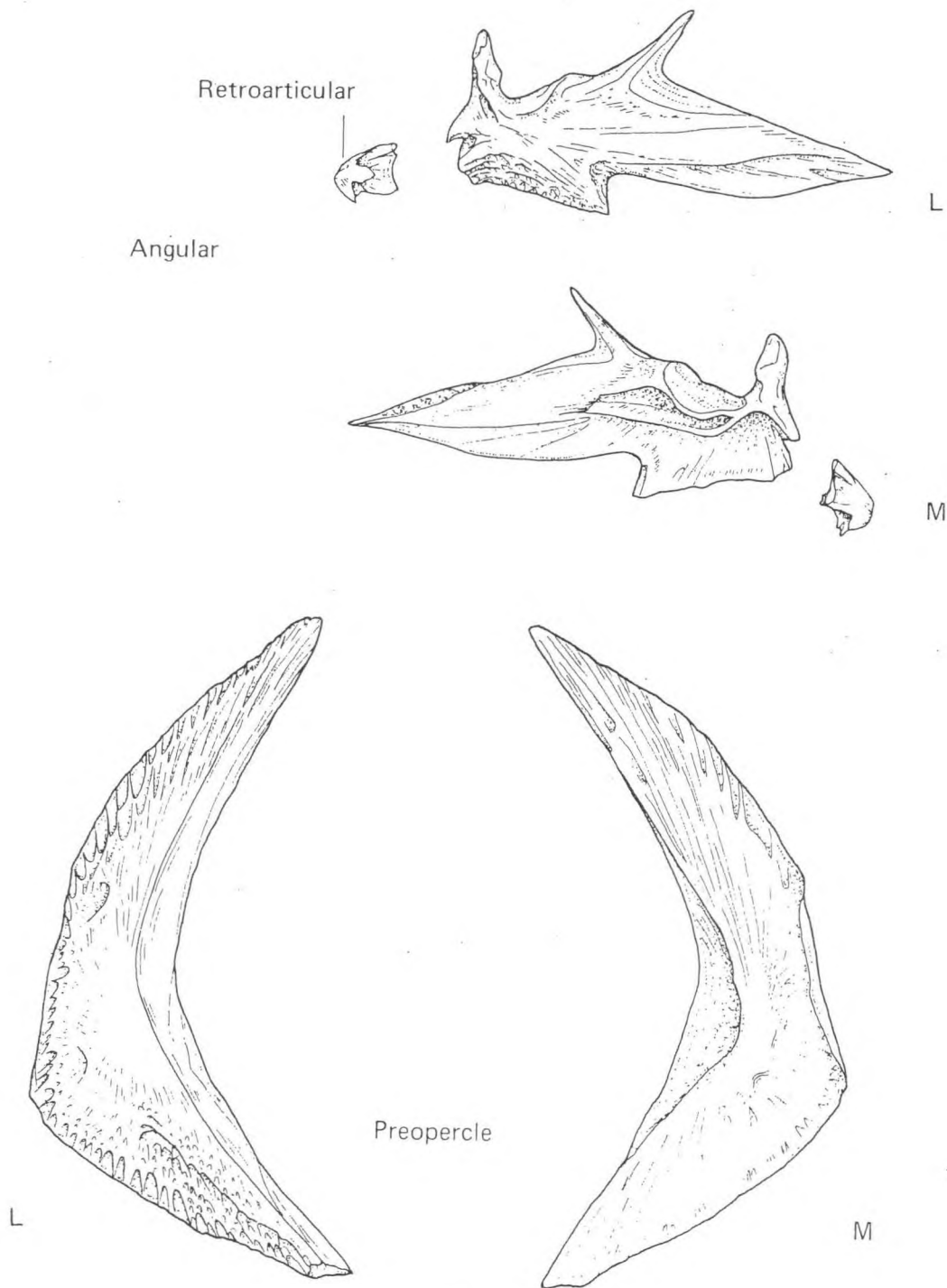


M

Dentary

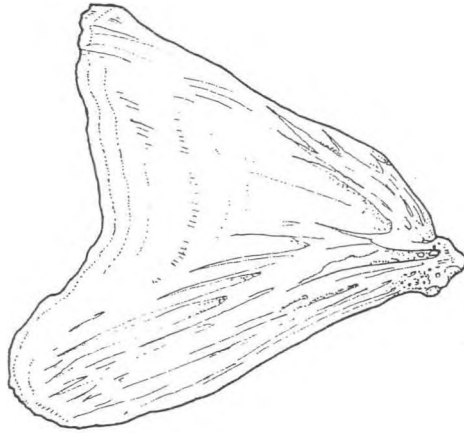
PLEURONECTIDAE *Hippoglossus stenolepis*

LATERAL SKULL BONES

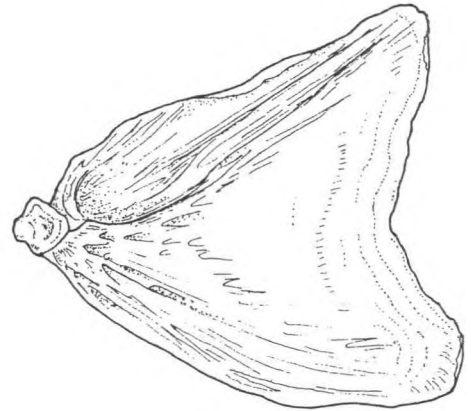


PLEURONECTIDAE *Hippoglossus stenolepis*

OPERCULAR SERIES

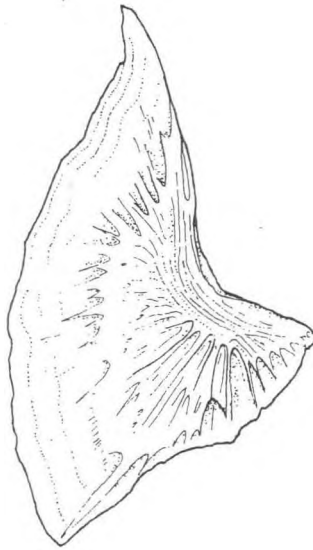


L

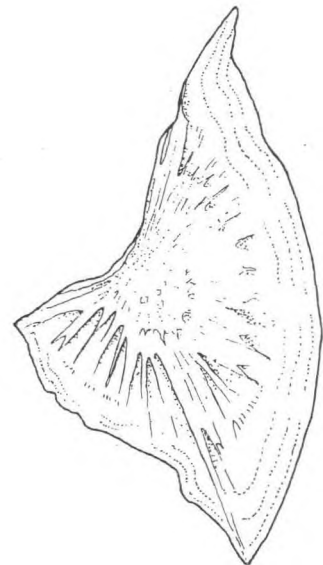


M

Opercle



L



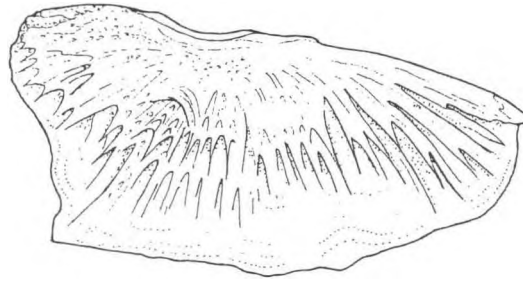
M

Subopercle

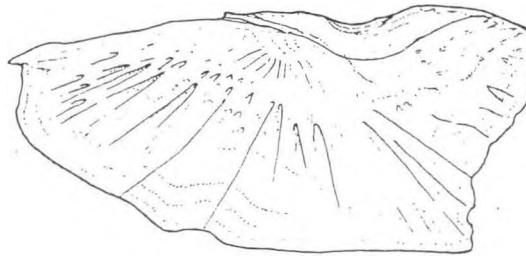
PLEURONECTIDAE *Hippoglossus stenolepis*

OPERCULAR SERIES

Interopercle



L

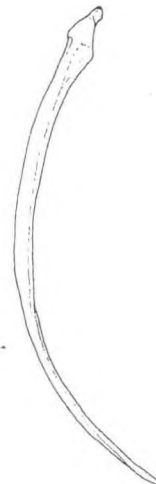


M

Branchiostegal Ray



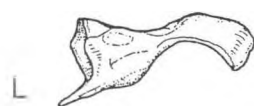
L



M

PLEURONECTIDAE *Hippoglossus stenolepis*

MANDIBULAR ARCH



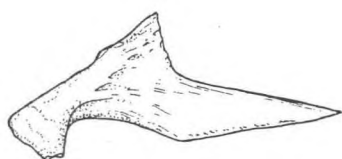
L



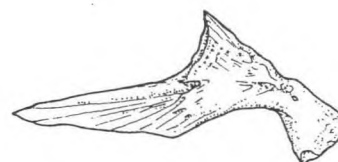
M

right

Palatine

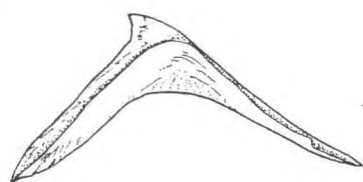


L

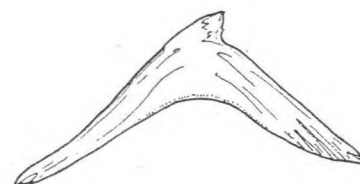


M

left



L

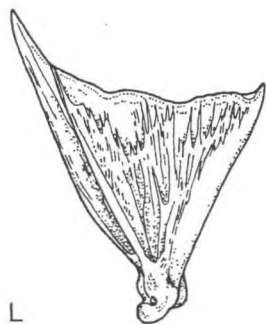


M

Ectopterygoid

PLEURONECTIDAE *Hippoglossus stenolepis*

MANDIBULAR ARCH

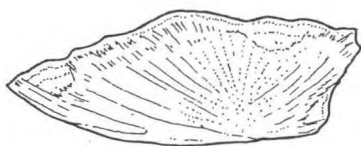


L

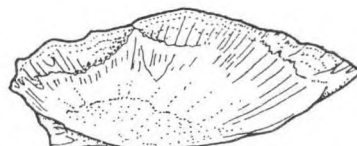


M

Quadrates



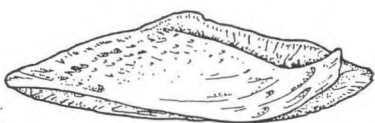
L



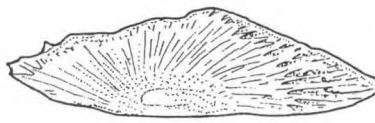
M

right

Mesopterygoid



L



M

left

PLEURONECTIDAE *Hippoglossus stenolepis*

MANDIBULAR ARCH



Metapterygoid

HYOID ARCH

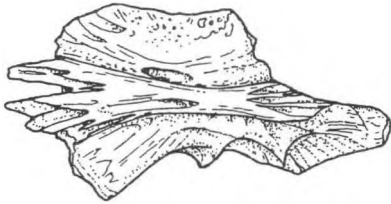


Hyomandibular

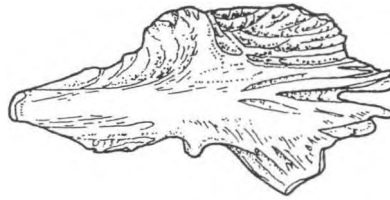
Symplectic

PLEURONECTIDAE *Hippoglossus stenolepis*

HYOID ARCH



L

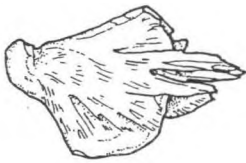


M

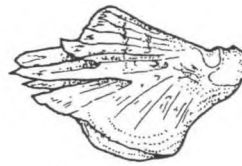
Ceratohyal



Interhyal



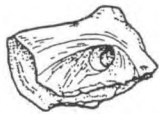
L



M

Epihyal

1



upper

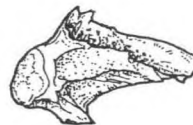


Hypohyal

2



lower



M

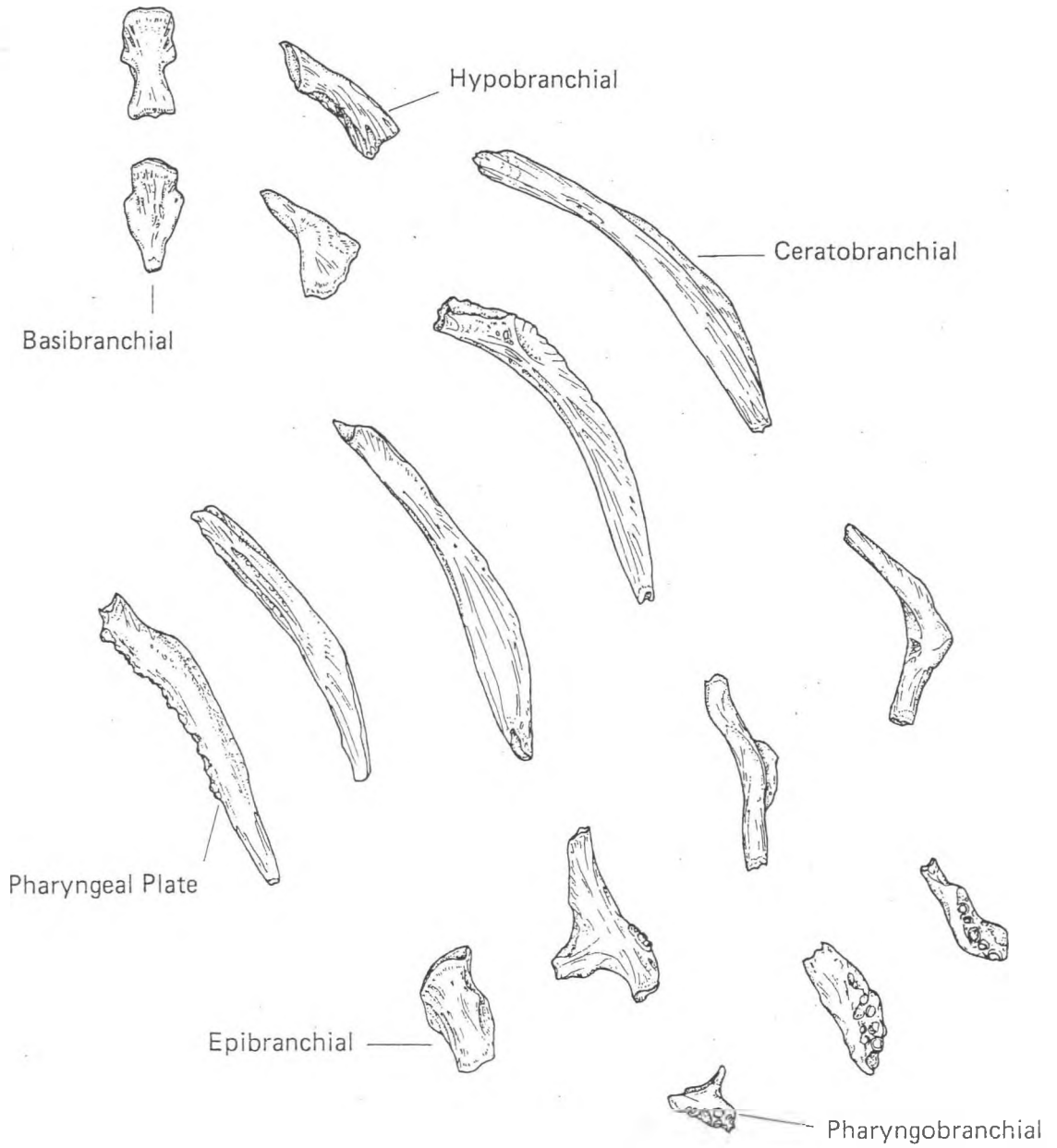
L

PLEURONECTIDAE *Hippoglossus stenolepis*

HYOID ARCH



BRANCHIAL ARCH

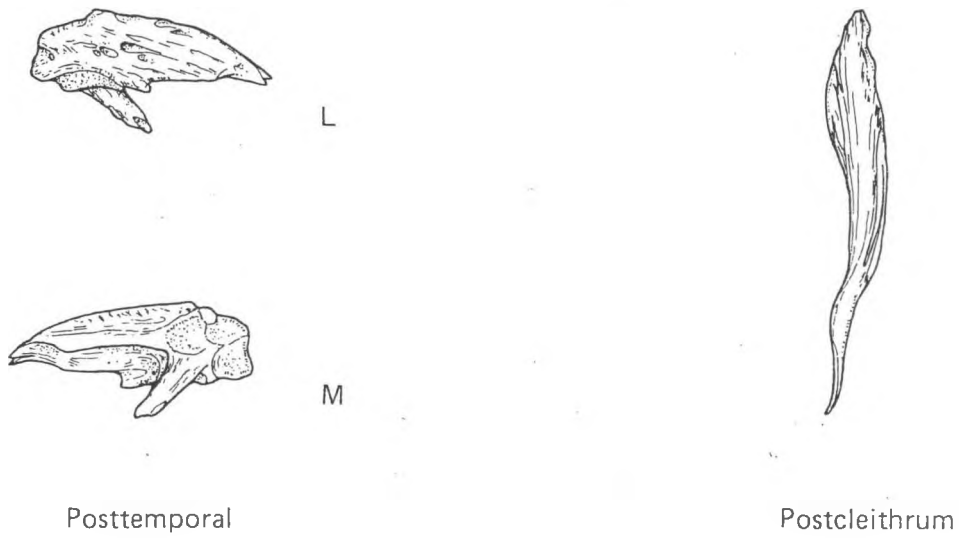


PLEURONECTIDAE *Hippoglossus stenolepis*

BRANCHIAL ARCH



PECTORAL GIRDLE

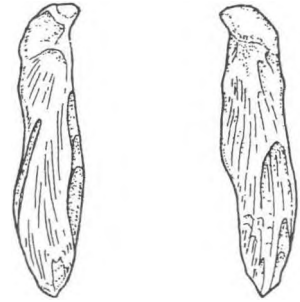


PLEURONECTIDAE *Hippoglossus stenolepis*

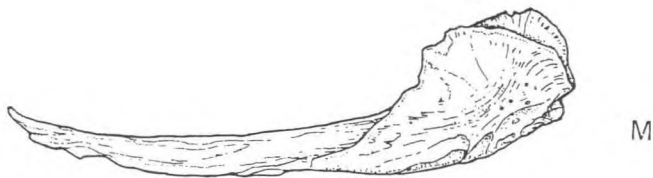
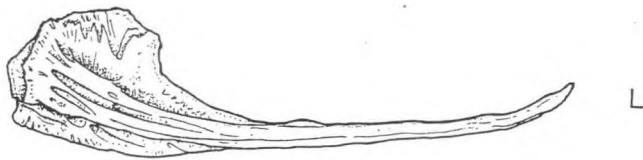
PECTORAL GIRDLE



Scapula



Supracleithrum



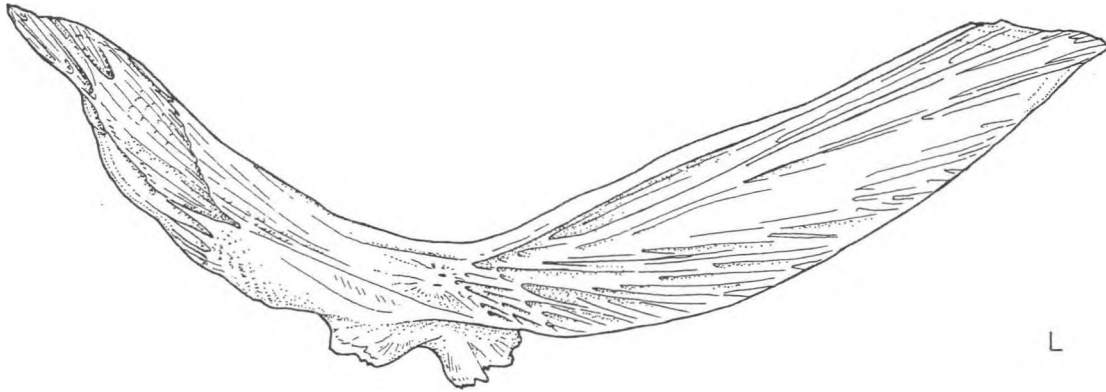
Coracoid



Radials

PLEURONECTIDAE *Hippoglossus stenolepis*

PECTORAL GIRDLE



L

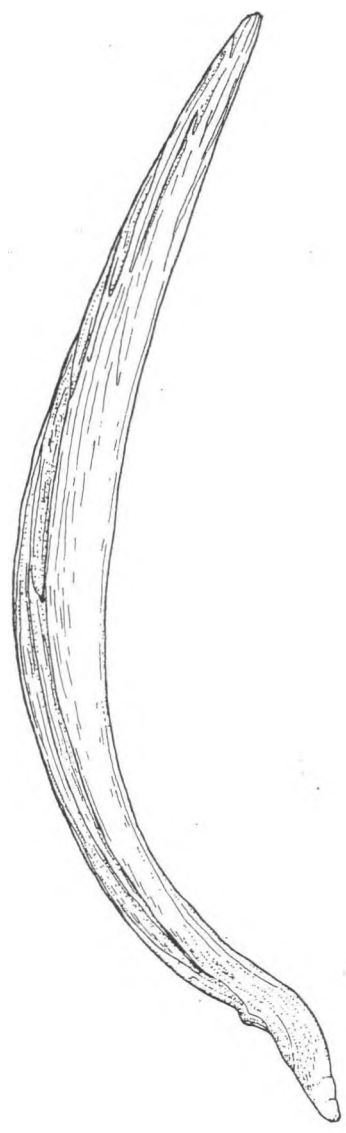


M

Cleithrum

PLEURONECTIDAE *Hippoglossus stenolepis*

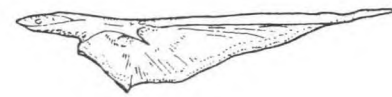
PELVIC GIRDLE



Interhaemal Spine



L

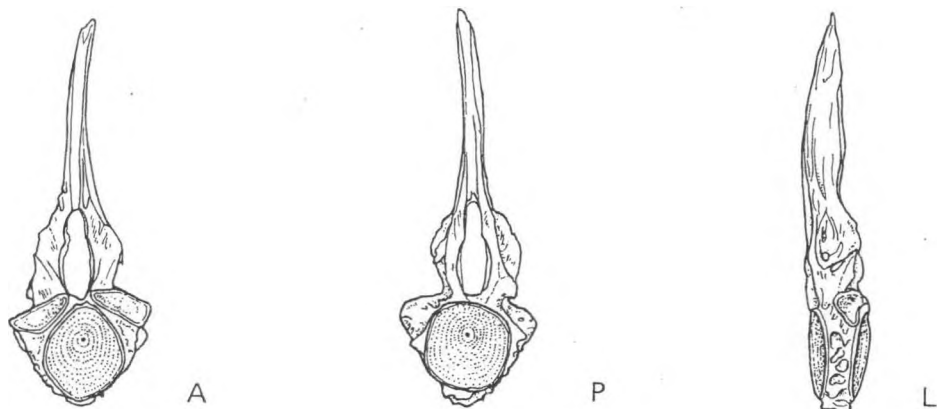


M

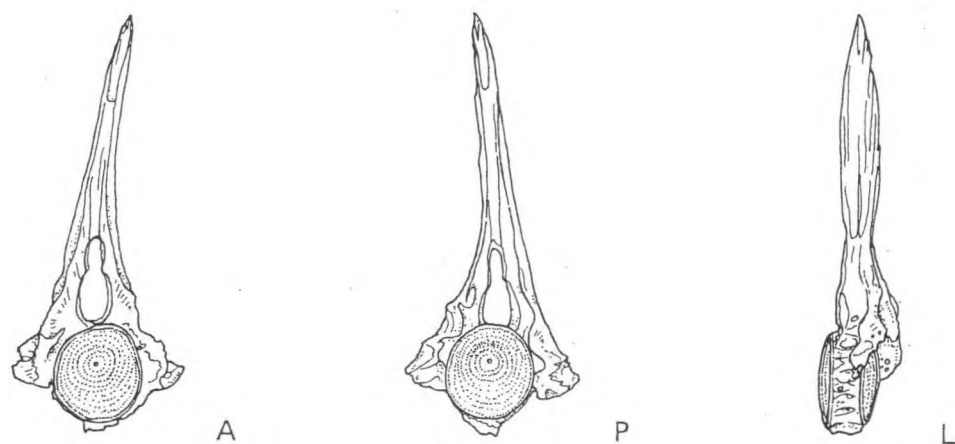
Basipterygium

PLEURONECTIDAE *Hippoglossus stenolepis*

VERTEBRAL COLUMN



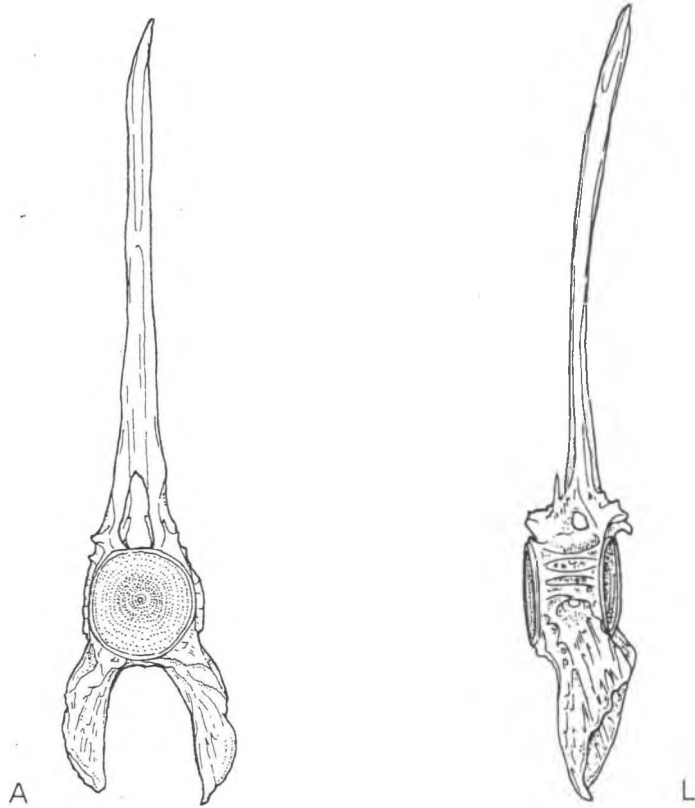
Atlas Vertebra



Thoracic Vertebra

PLEURONECTIDAE *Hippoglossus stenolepis*

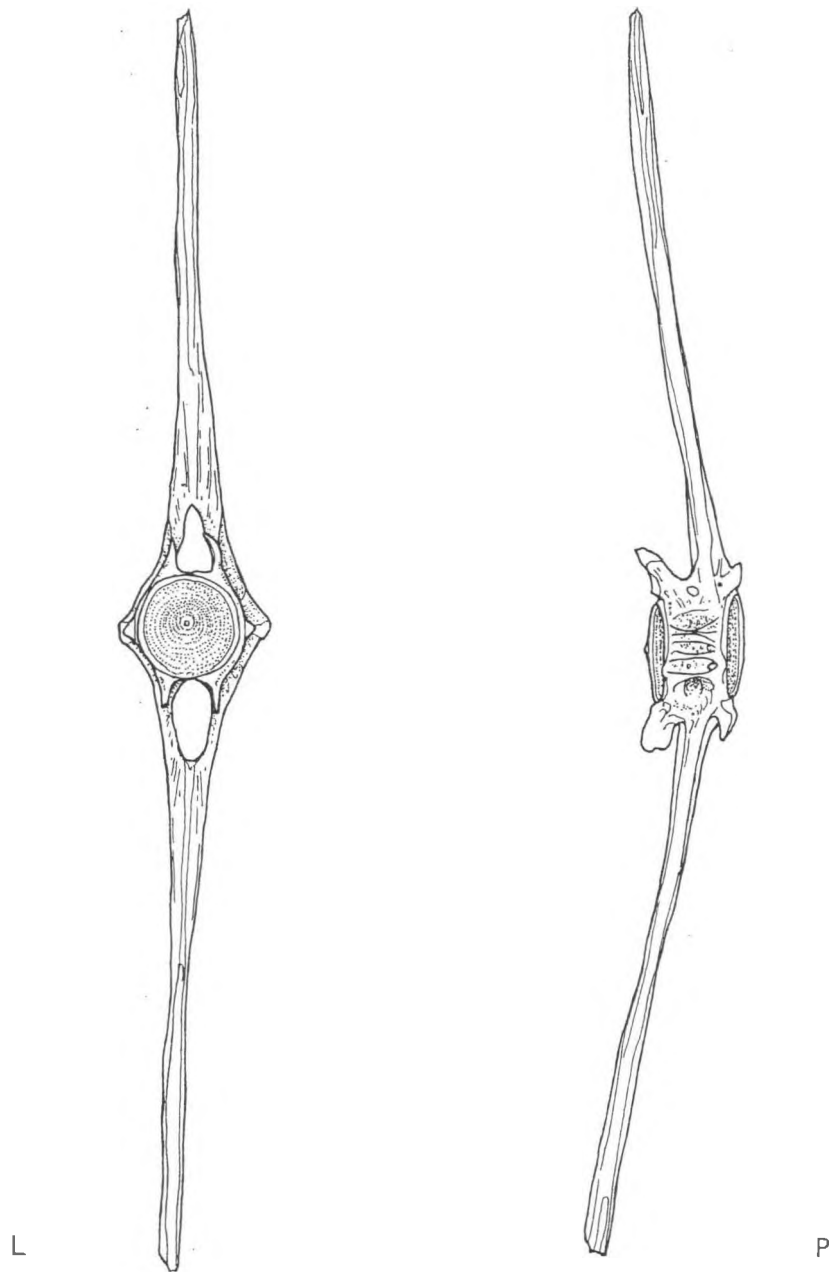
VERTEBRAL COLUMN



Precaudal Vertebra

PLEURONECTIDAE *Hippoglossus stenolepis*

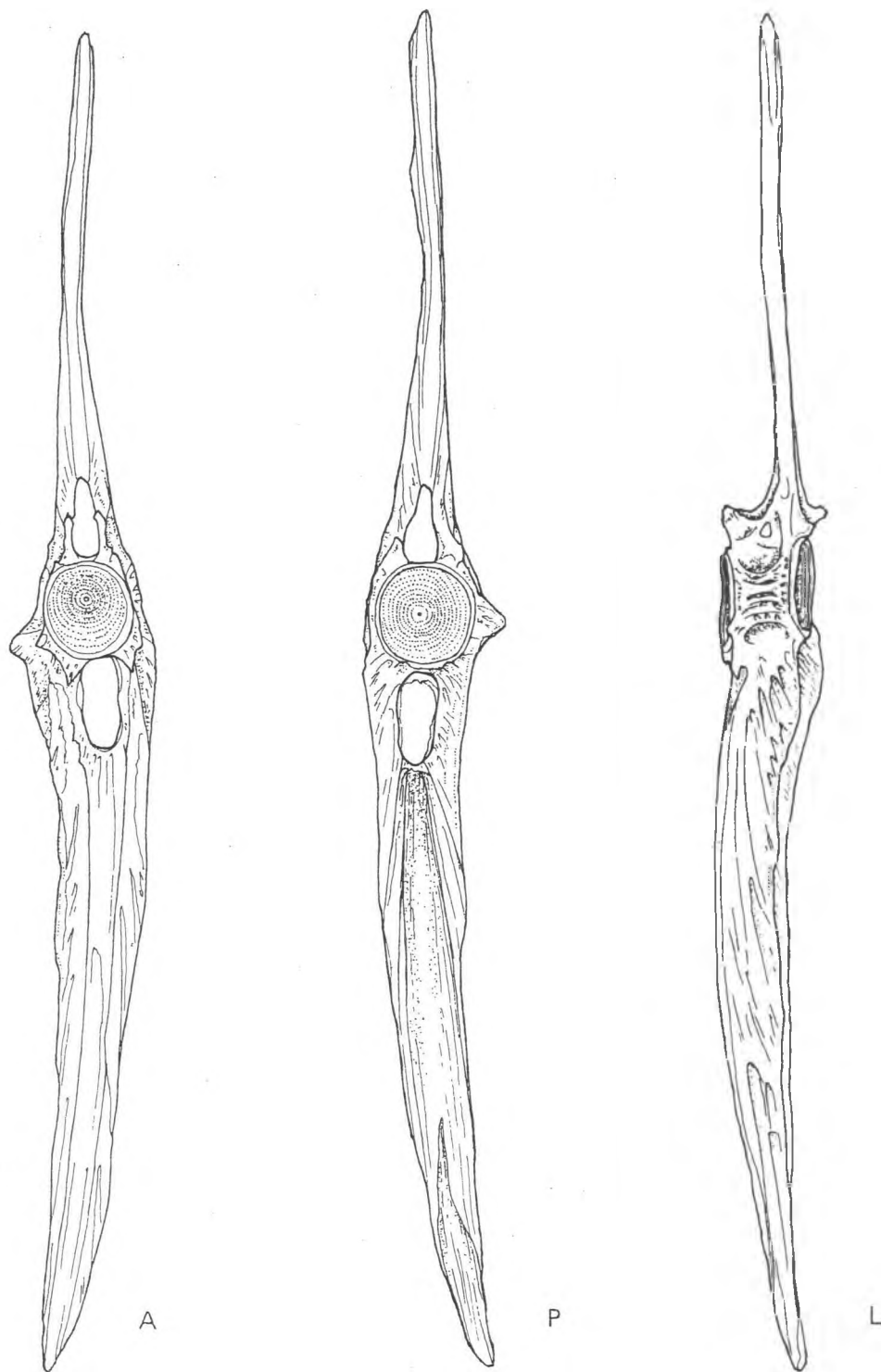
CAUDAL SKELETON



Caudal Vertebra

PLEURONECTIDAE *Hippoglossus stenolepis*

CAUDAL SKELETON



Caudal Vertebra - articulates with Interhaemal Spine

PLEURONECTIDAE *Hippoglossus stenolepis*

CAUDAL SKELETON

