

Illustrations of the Human Skeleton

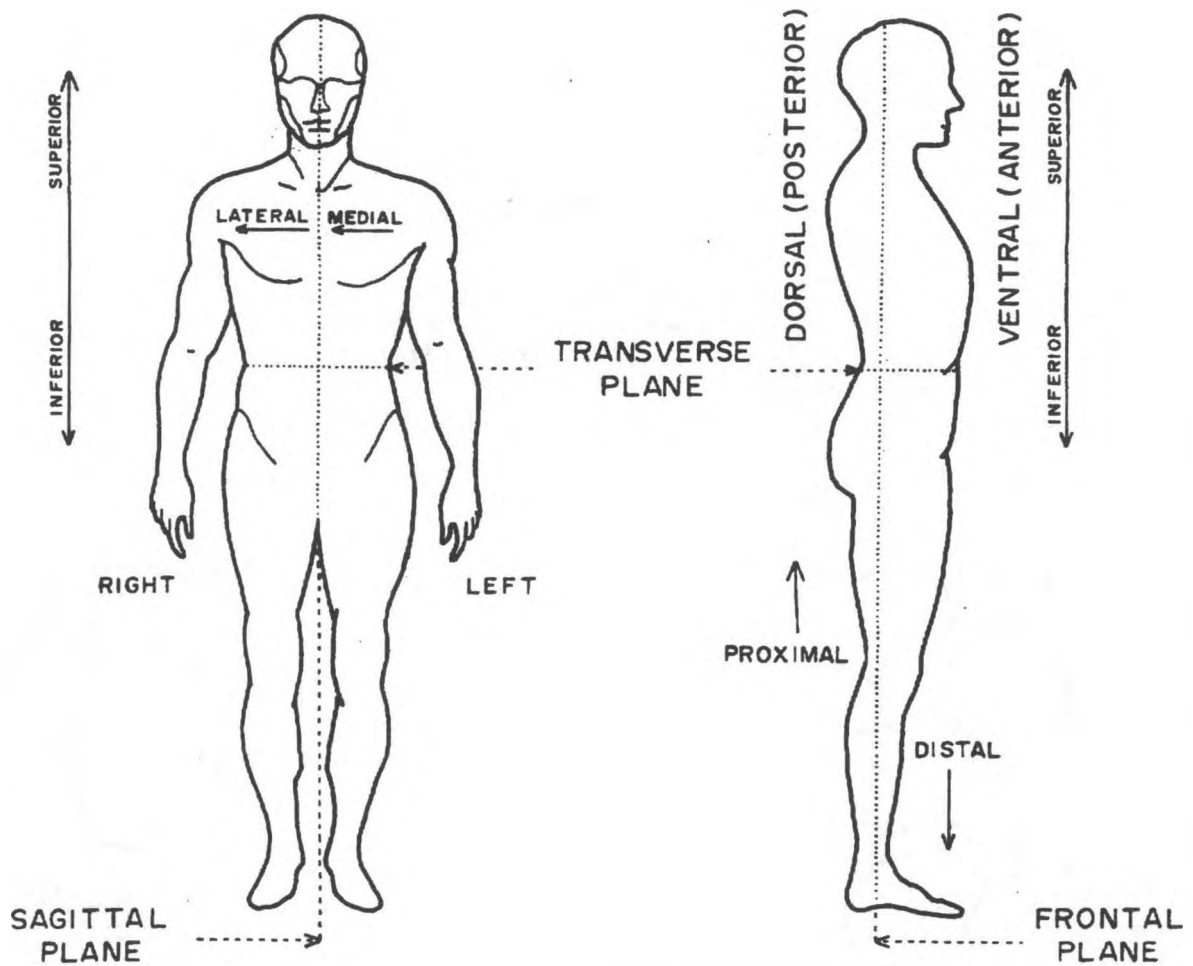


Figure 26. Anatomical surfaces and directions in the human body (from W.M. Bass (1971), *Human Osteology*. Missouri Archaeological Society, Columbia, Missouri, used with permission of the author and publisher).

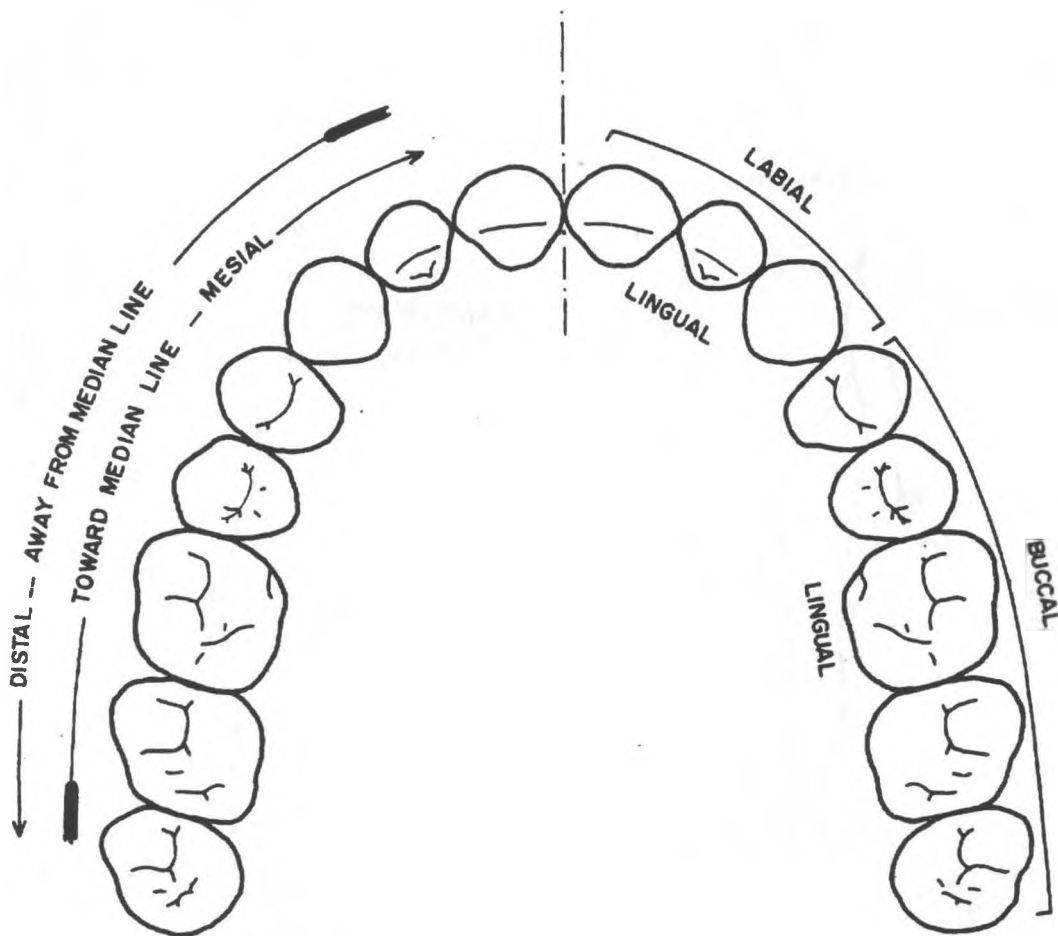


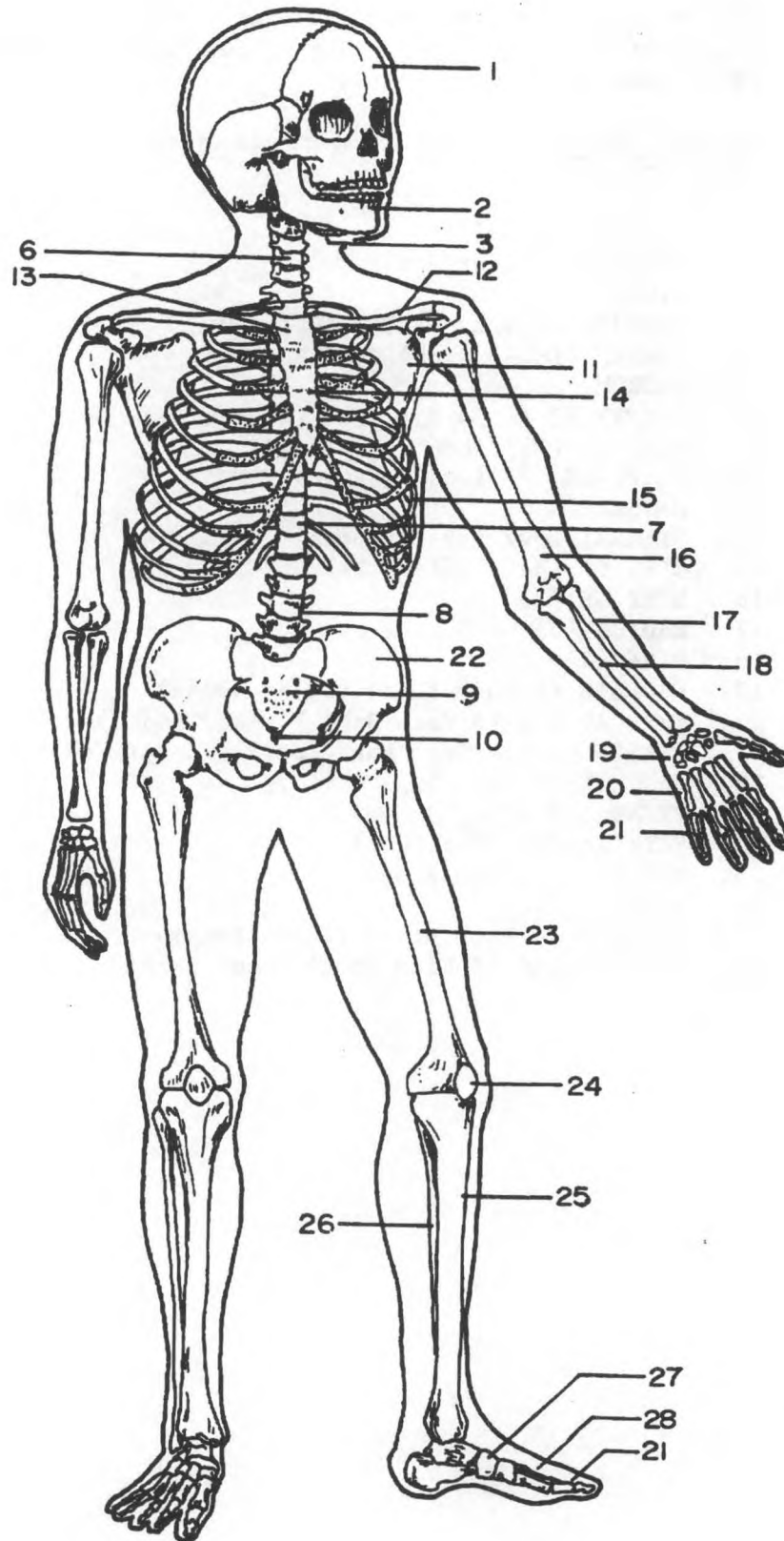
Figure 27. Anatomical surfaces and directions in the human dentition (from R.C. Wheeler (1974), *Dental Anatomy, Physiology, and Occlusion*. W.B. Saunders Co., used with permission of the publisher).

154 FOUND! HUMAN REMAINS

Figure 28. Illustrations of the Human Skeleton I (modified from Illustration by Carolina Biological supply Company, © 1968, used with permission).

Key to Numbered Bones (numbers in parentheses indicate quantity).

1. CRANIUM (skull)
2. MANDIBLE (Lower Jaw)
3. HYOID
6. CERVICAL (Neck) VERTEBRAE (7)
8. LUMBAR (Lower Back) VERTEBRAE (5)
9. SACRUM
10. COCCYX (3 to 5) Elements (Tail Bone)
11. SCAPULA (2) (Shoulder Blade)
12. CLAVICLE (2) (Collar Bone)
13. MANUBRIUM
14. STERNAL BODY (Breast Bone)
15. RIBS (12 Each Side = 24)
16. HUMERUS (2)
17. RADIUS (2)
18. ULNA (2)
19. CARPALS (8 Each Hand) (Wrist Bones)
20. METACARPALS (5 Each Hand) (Hand Bones)
21. PHALANGES (14 Each Hand/Foot) (Finger/Toe Bones)
22. INNOMINATE (2) (Hip/Pelvis)
23. FEMUR (2) (Thigh Bone)
24. PATELLA (2) (Knee Cap)
25. TIBIA (2) (Shin Bone)
26. FIBULA (2)
27. TARSALS (7 Each Foot) (Ankle Bones)
28. METATARSALS (5 Each Foot) (Foot Bones)

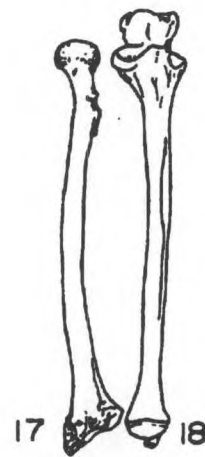
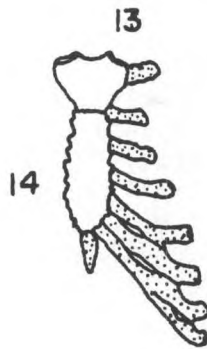
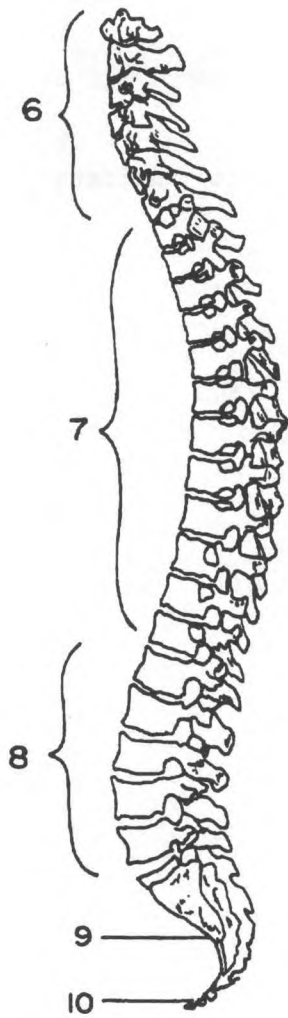


156 FOUND! HUMAN REMAINS

Figure 29. Illustrations of the Human Skeleton II (modified from Illustration by Carolina Biological Supply Company, c 1968, used with permission).

Key to Numbered Bones (numbers in parentheses indicate quantity).

3. HYOID
4. FIRST CERVICAL VERTEBRA (Atlas)
5. SECOND CERVICAL VERTEBRA (Axis)
6. CERVICAL VERTEBRAE (7)
7. THORACIC VERTEBRAE (12)
8. LUMBAR VERTEBRAE (5)
9. SACRUM
10. COCCYX
11. SCAPULA (2) (Left)
12. CLAVICLE (2) (Left)
13. MANUBRIUM
14. STERNAL BODY
16. HUMERUS (2) (Left)
17. RADIUS (2) (Right)
18. ULNA (2) (Right)

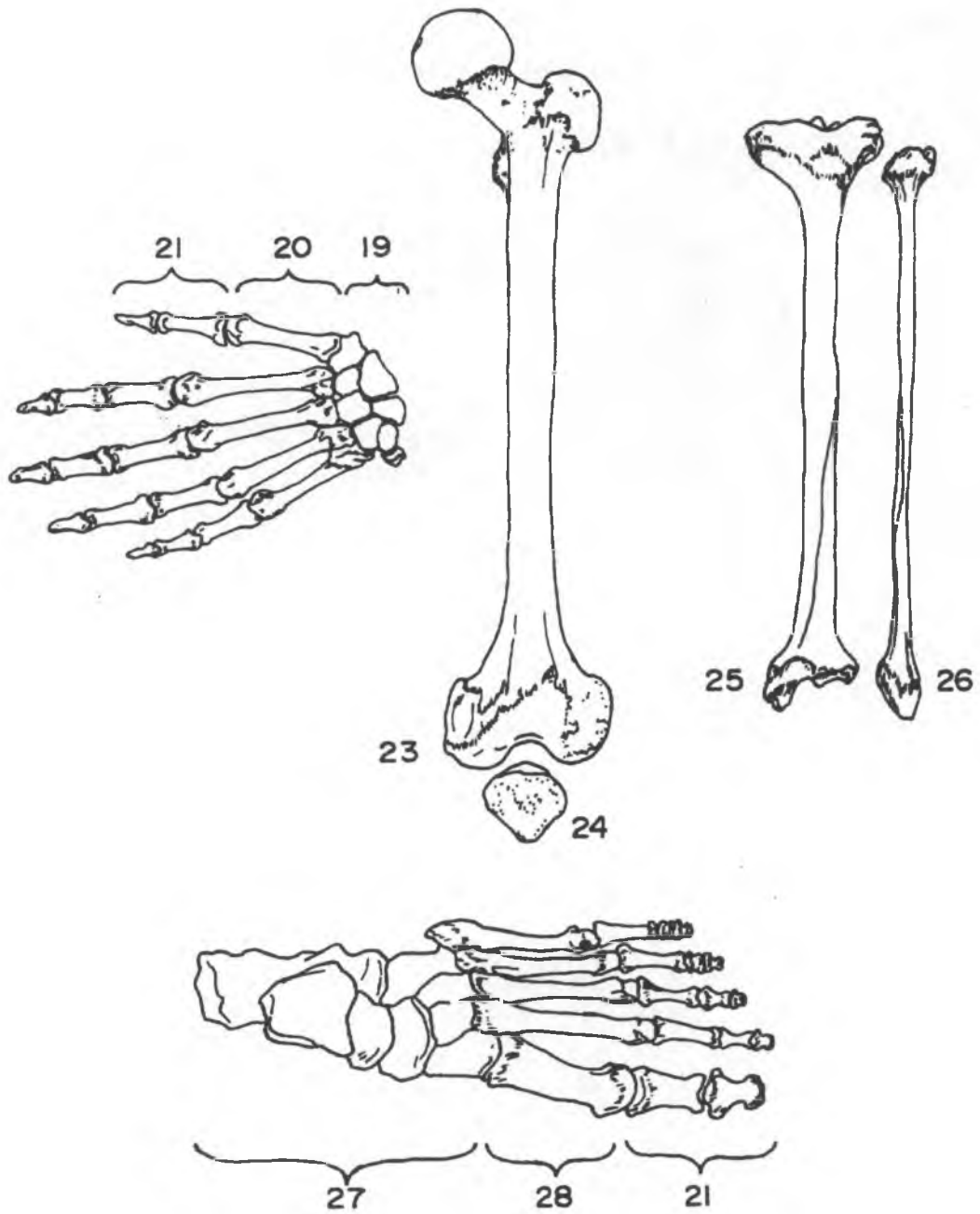


158 FOUND! HUMAN REMAINS

Figure 30. Illustrations of the Human Skeleton III (modified from Illustration by Carolina Biological Supply Company, © 1968, used with permission).

Key to Numbered Bones (numbers in parentheses indicate quantity).

- 19. **CARPALS** (8 Each hand)
- 20. **METACARPALS** (5 Each Hand)
- 21. **PHALANGES** (14 Each Hand/Foot)
- 23. **FEMUR** (2) (Left)
- 24. **PATELLA** (2)
- 25. **TIBIA** (2) (Left)
- 26. **FIBULA** (2) (Left)
- 27. **TARSALS** (7 Each Foot)
- 28. **METATARSALS** (7 Each Foot)



Photographic Views of the Human Skeleton.

The size of each bone shown in the following figures can be found by comparison with the whole skeleton shown in Figure 28.

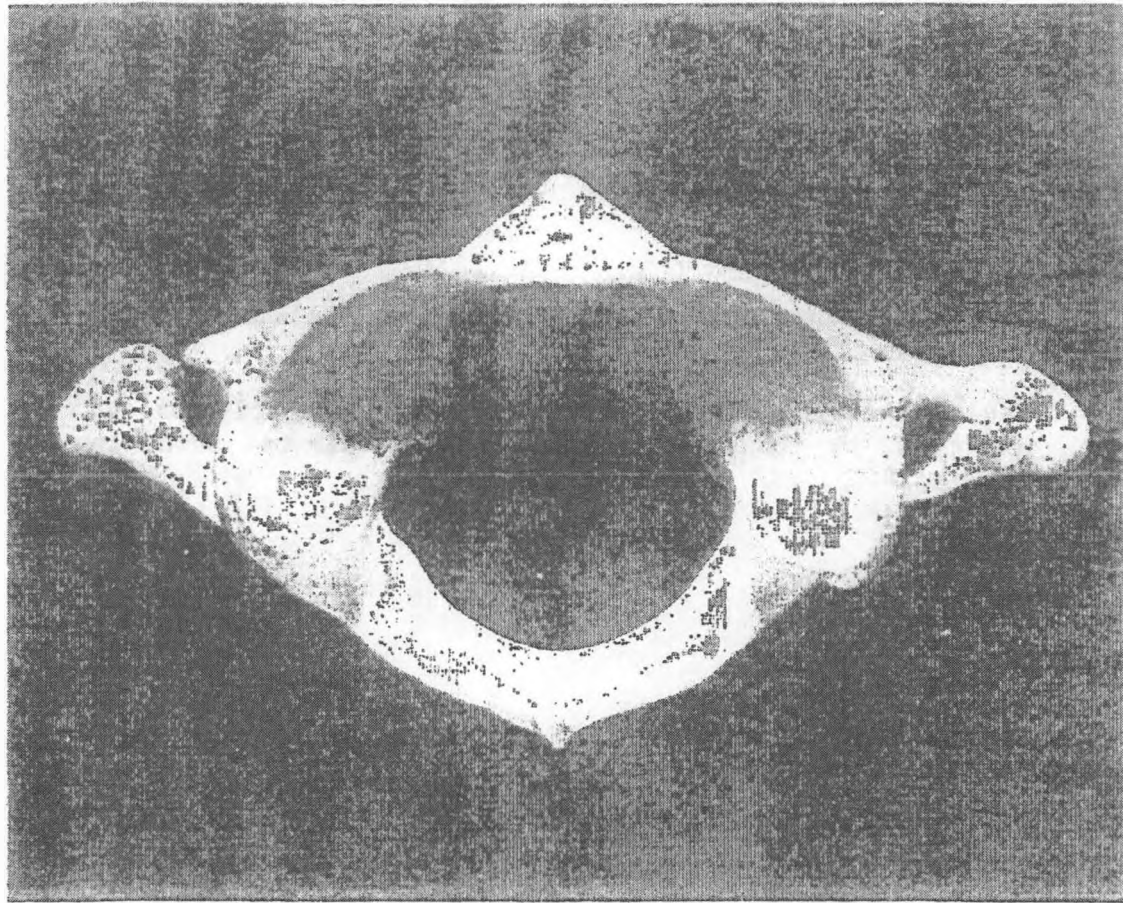


Figure 31. First cervical vertebra (atlas, superior view).

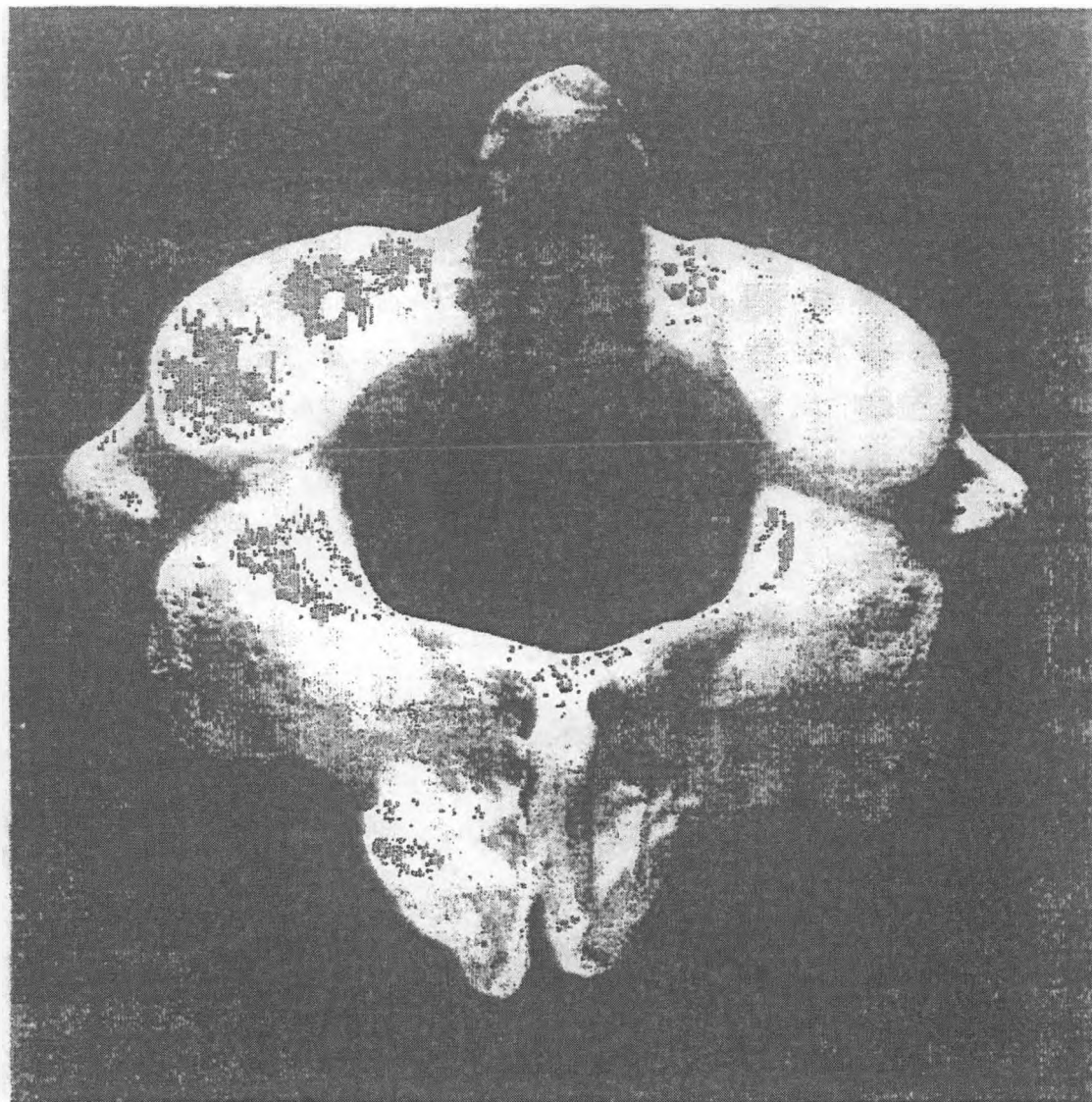
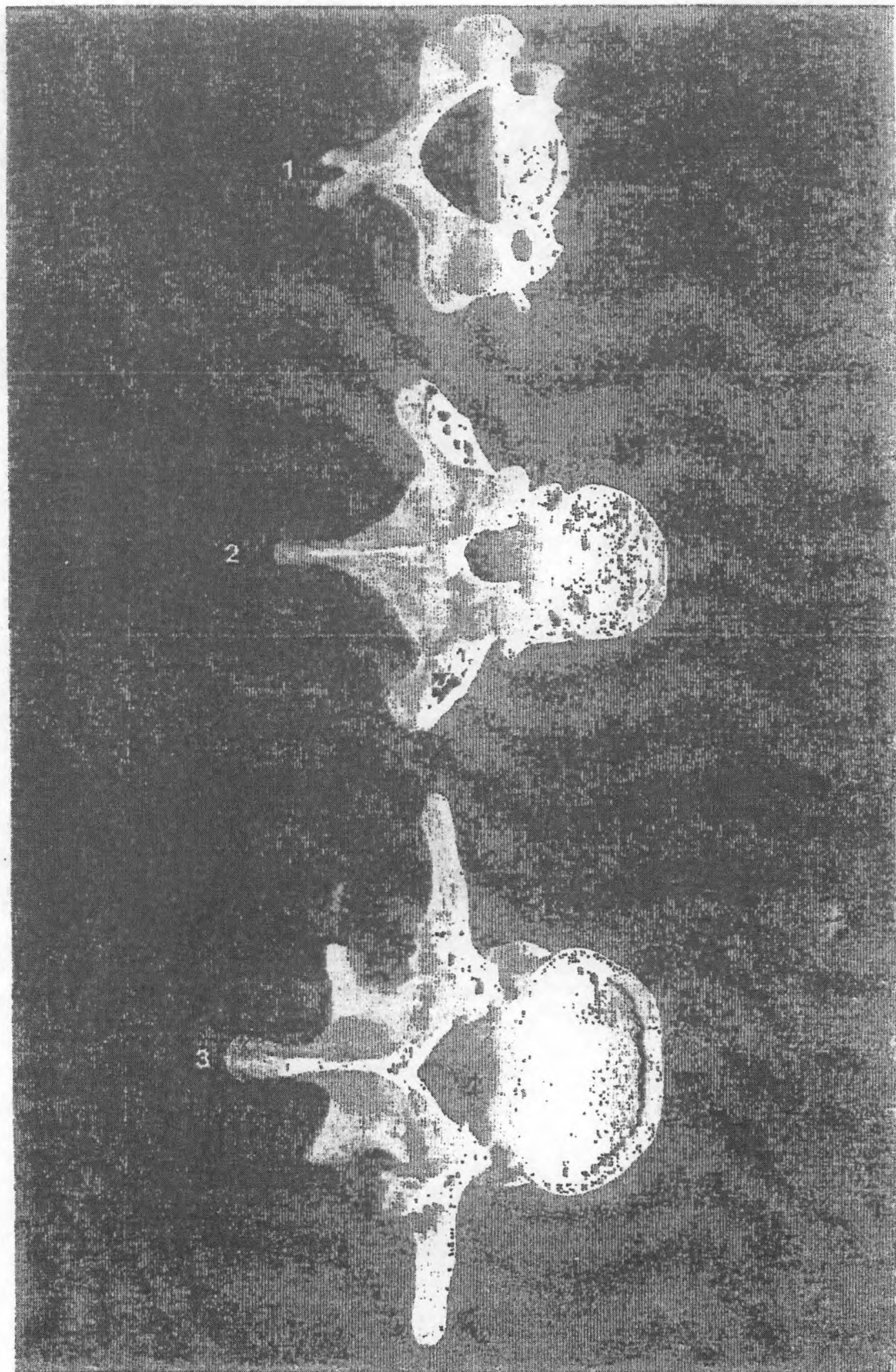
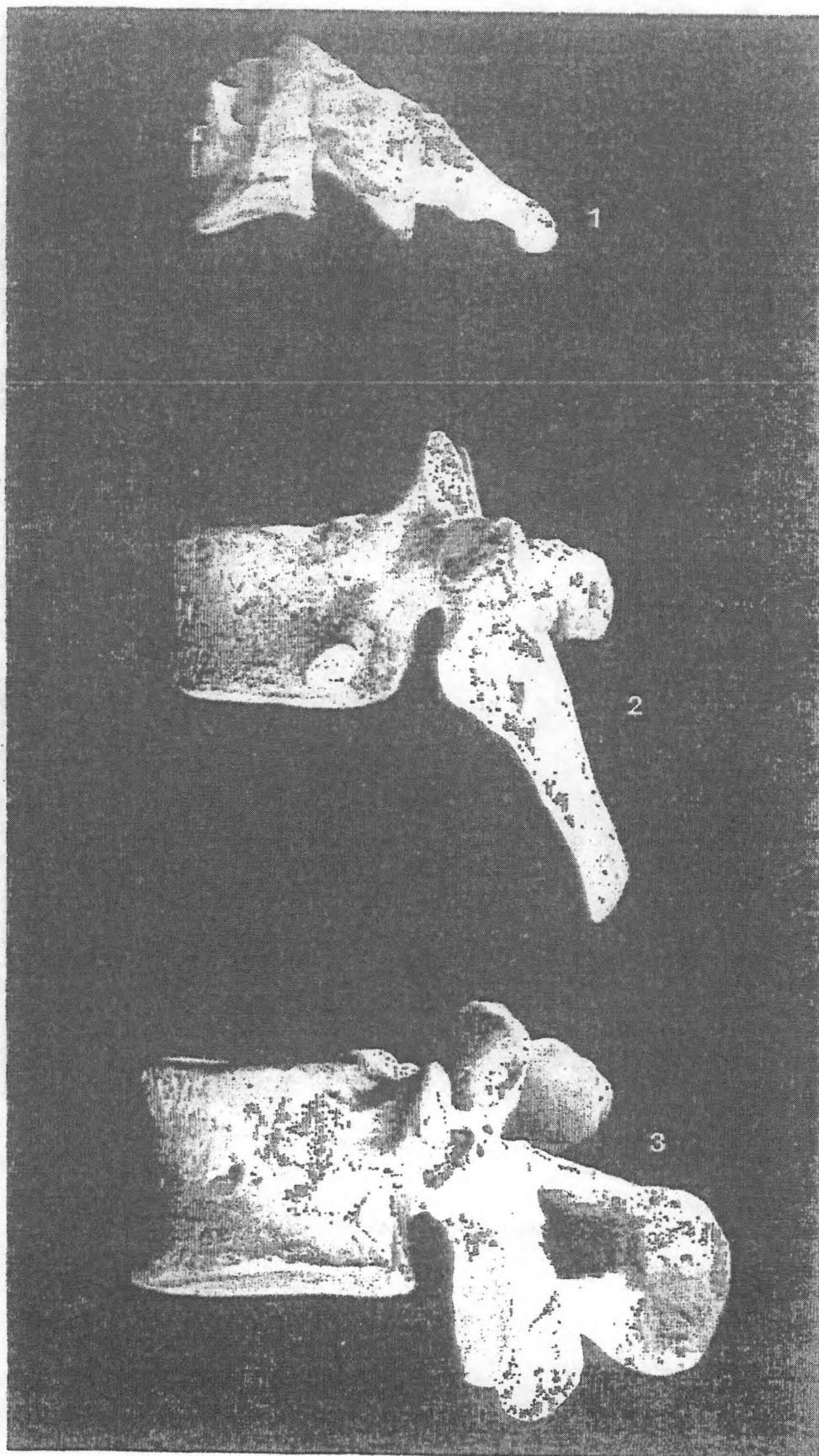


Figure 32. Above: Second cervical vertebra (axis, superior view).

Figure 33. Next page: Typical vertebrae: 1) cervical, 2) thoracic.
3) lumbar, all in superior view.

164 FOUND! HUMAN REMAINS





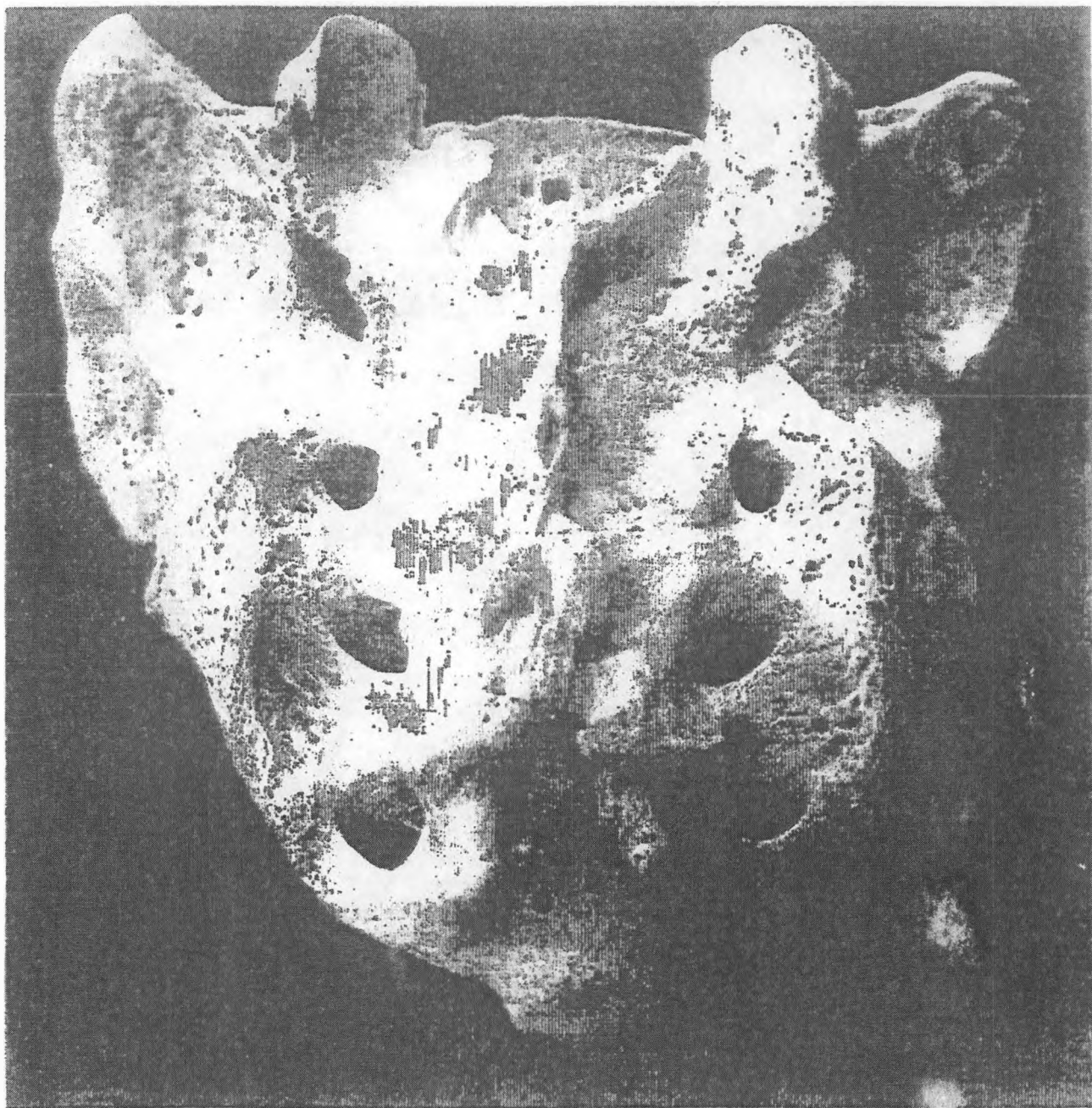


Figure 34. Previous page: Typical vertebrae: 1) cervical, 2) thoracic, 3) lumbar, side view.

Figure 35. Above: Sacrum (posterior view).

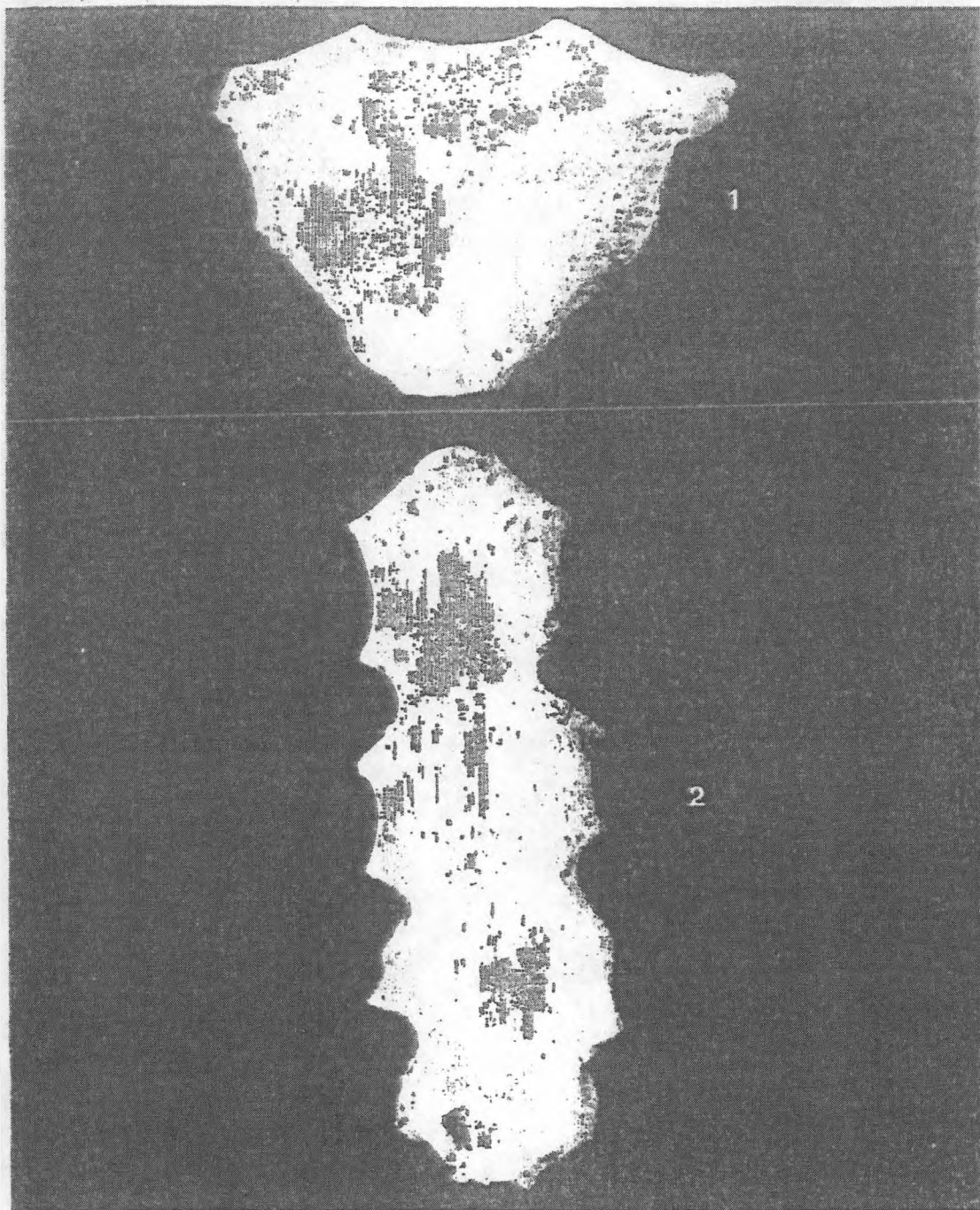
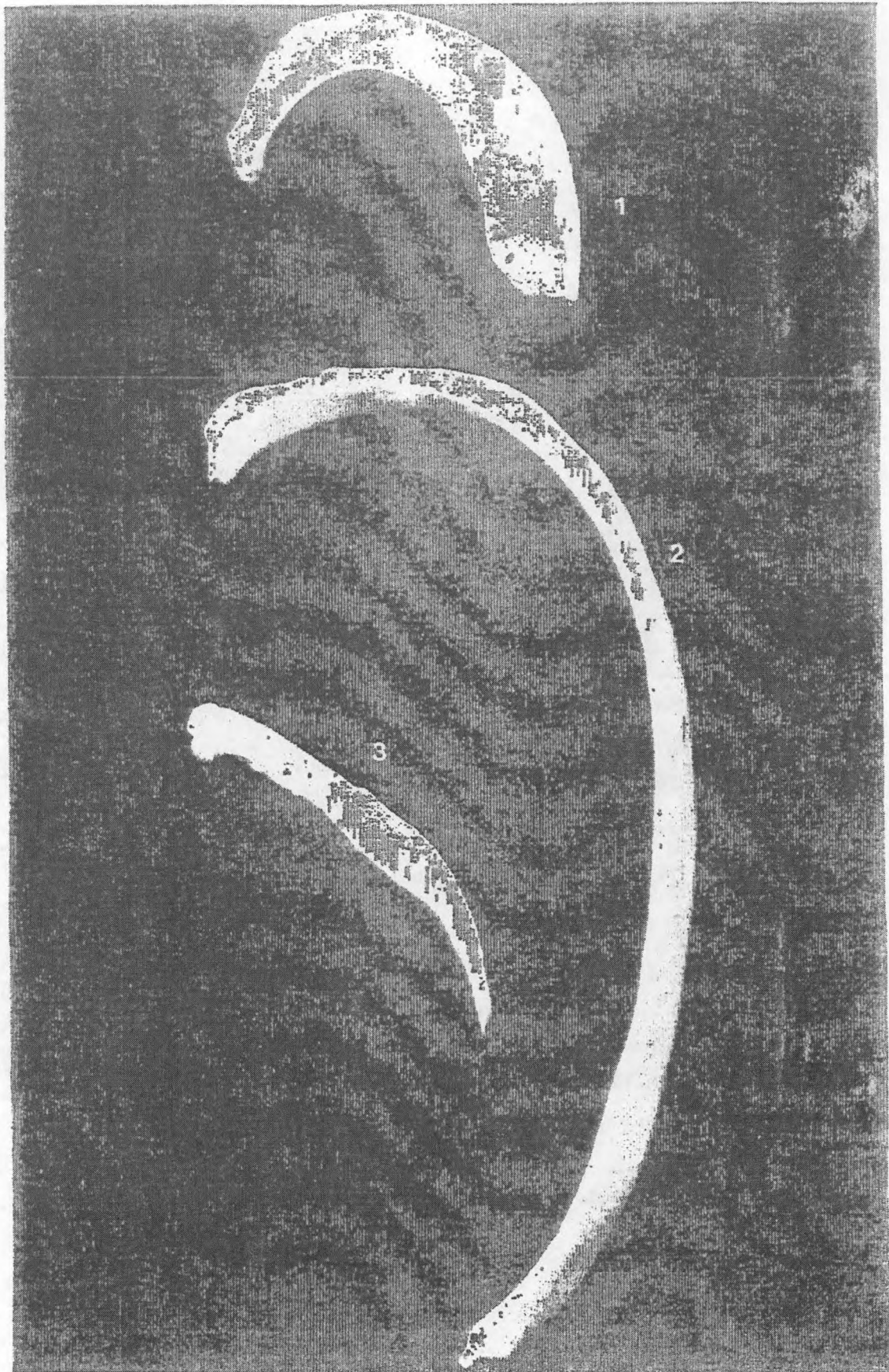
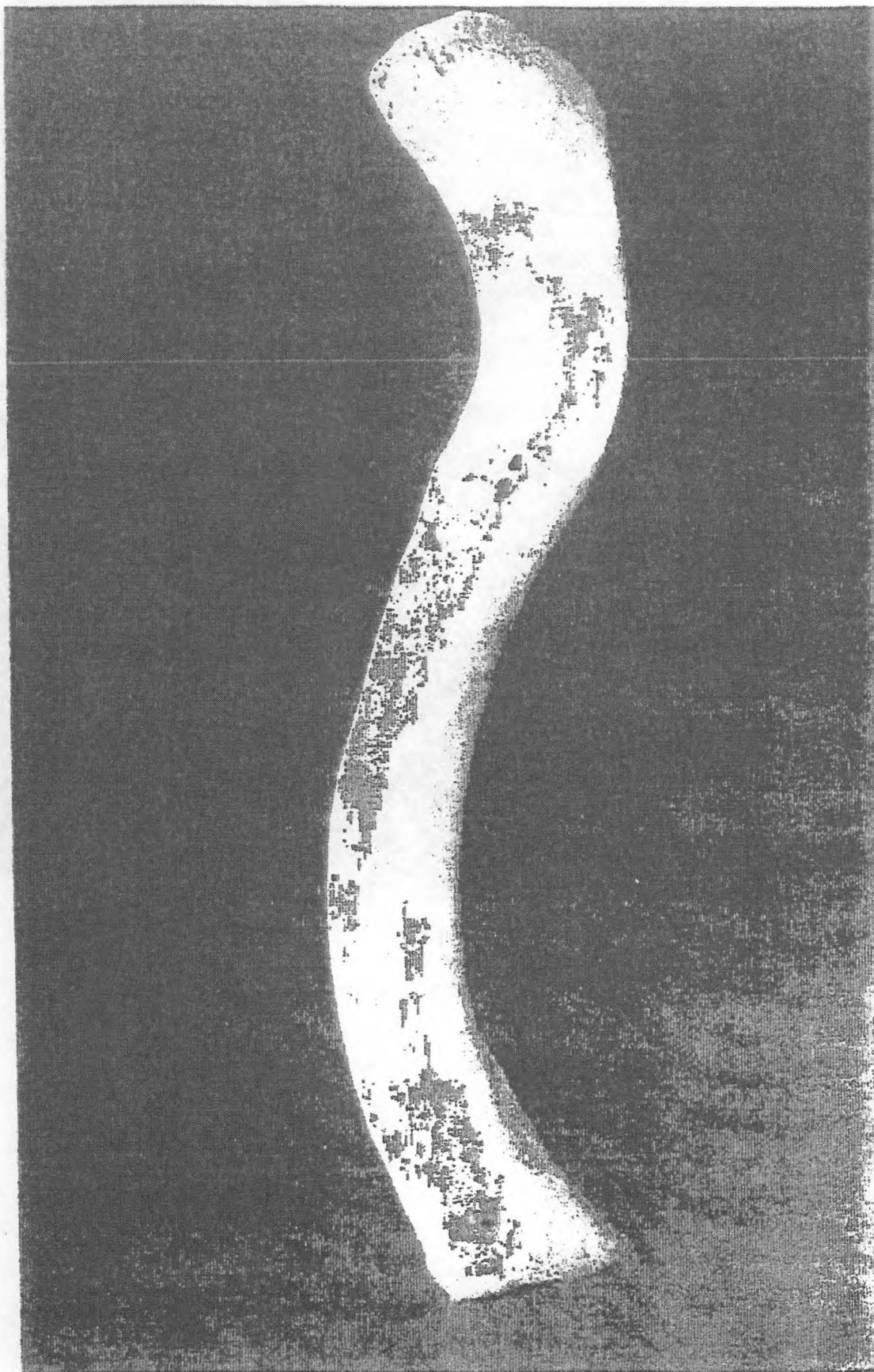


Figure 36. 1) Manubrium and 2) sternal body (front view).

Figure 37. Next page: Variation in rib shape: 1) left first rib, 2) left middle rib, 3) left twelfth rib.

168 FOUND! HUMAN REMAINS





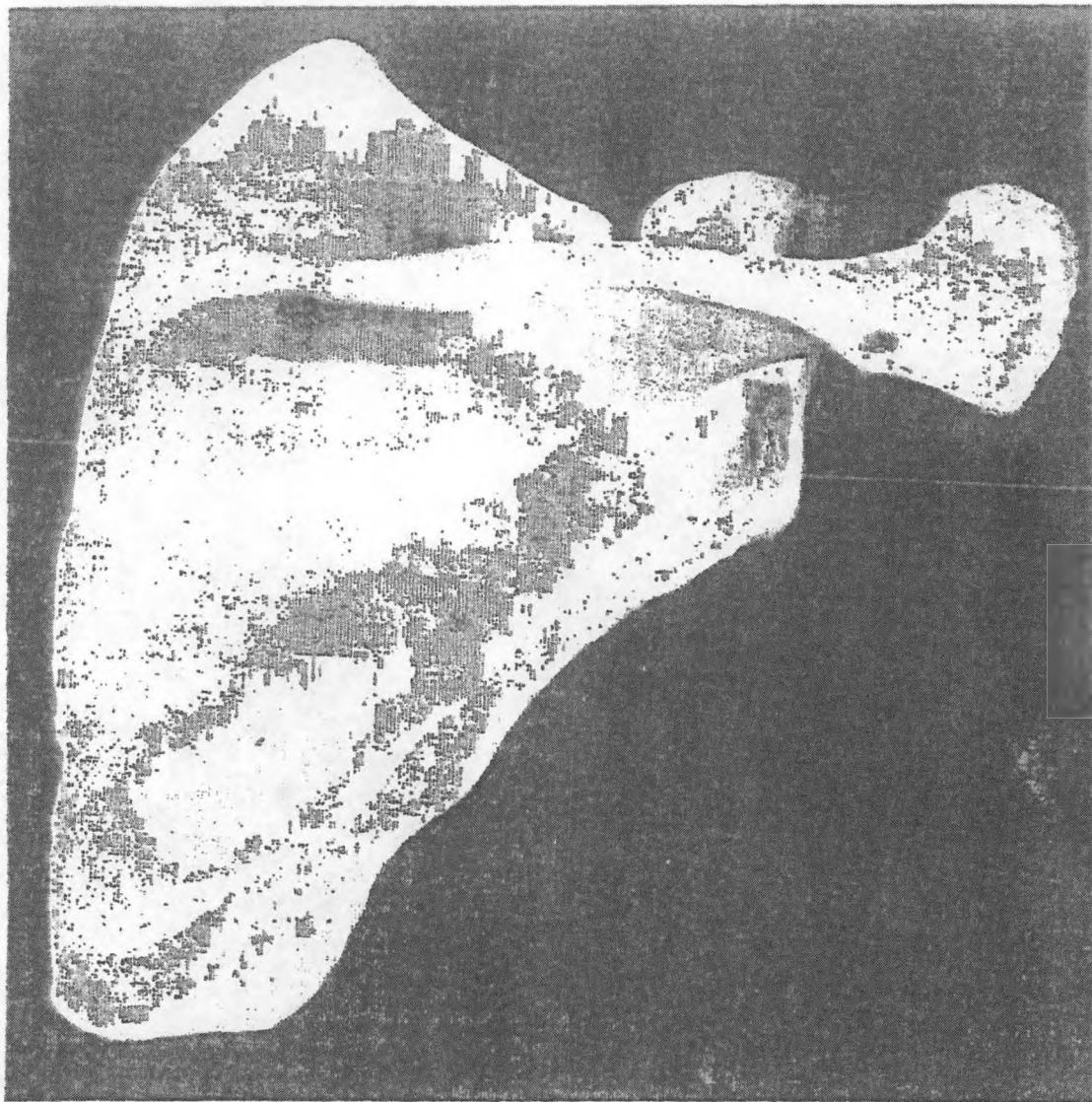
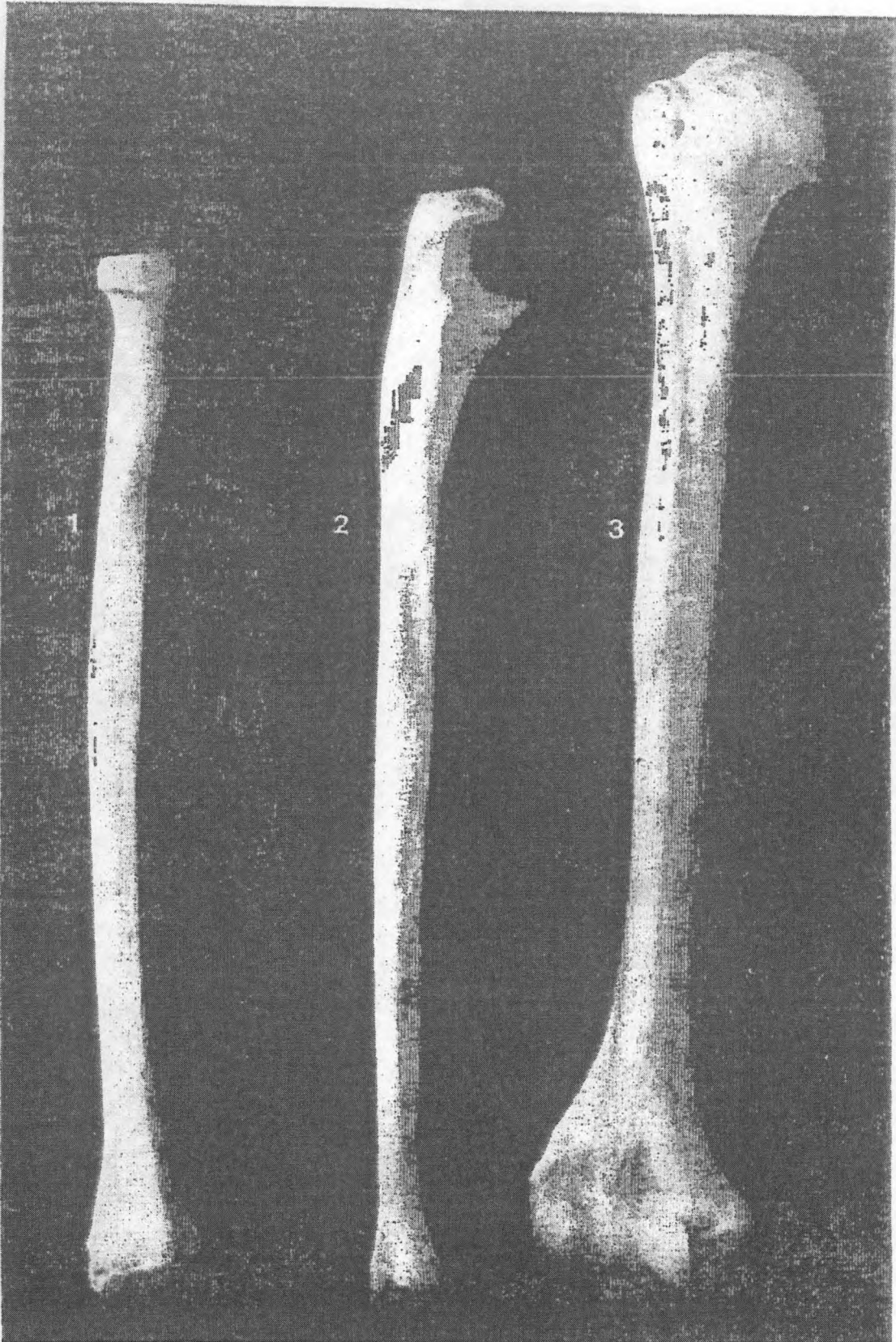


Figure 38. Preceding page: Clavicle (left, inferior view).

Figure 39. Above: Scapula (right, posterior view).

Figure 40. Opposite: Arm bones -- right: 1) radius (front view),
2) ulna (side view), 3) humerus (front view).

ILLUSTRATIONS OF THE HUMAN SKELETON 171



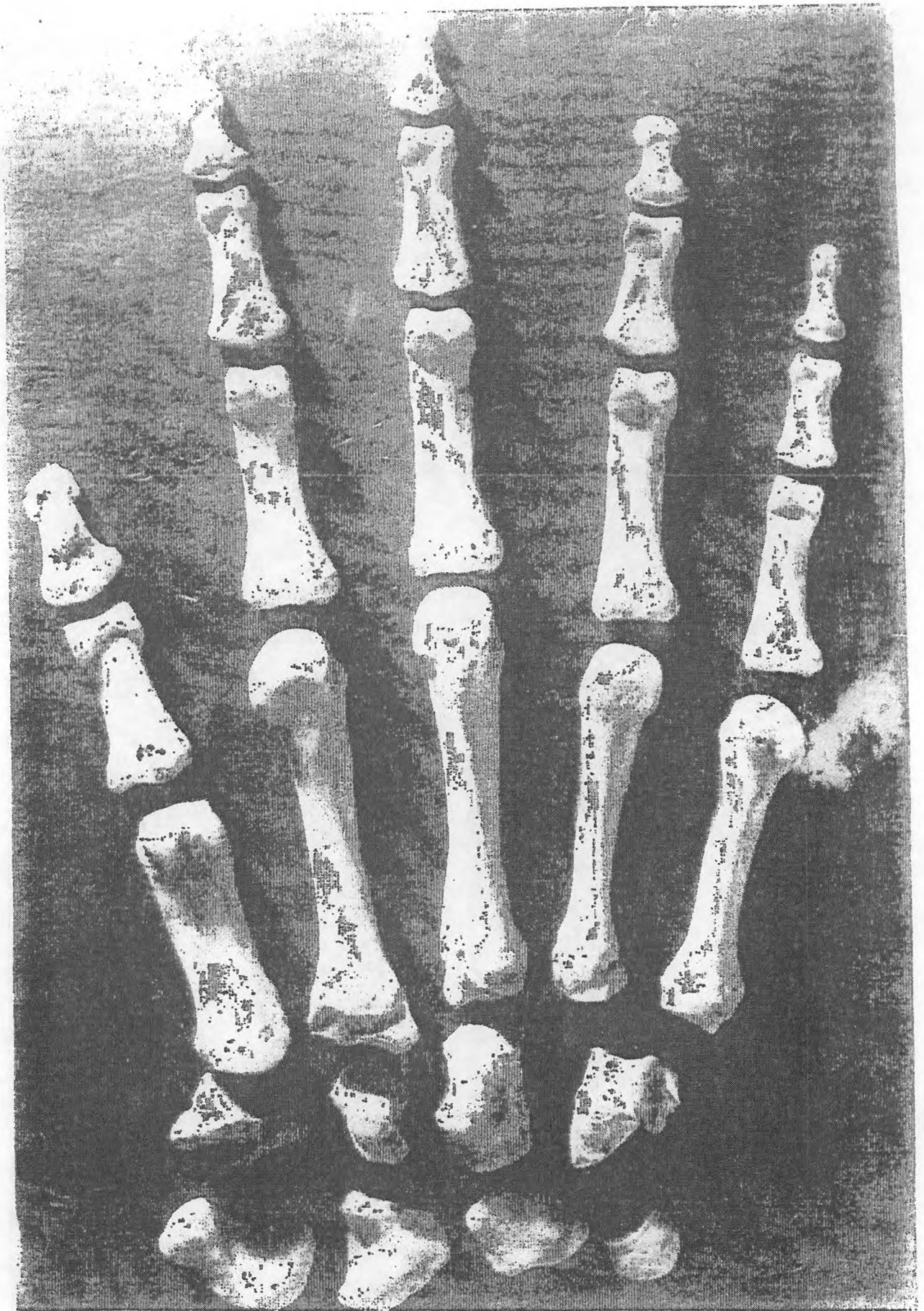


Figure 41. Wrist and hand bones (left, palm).

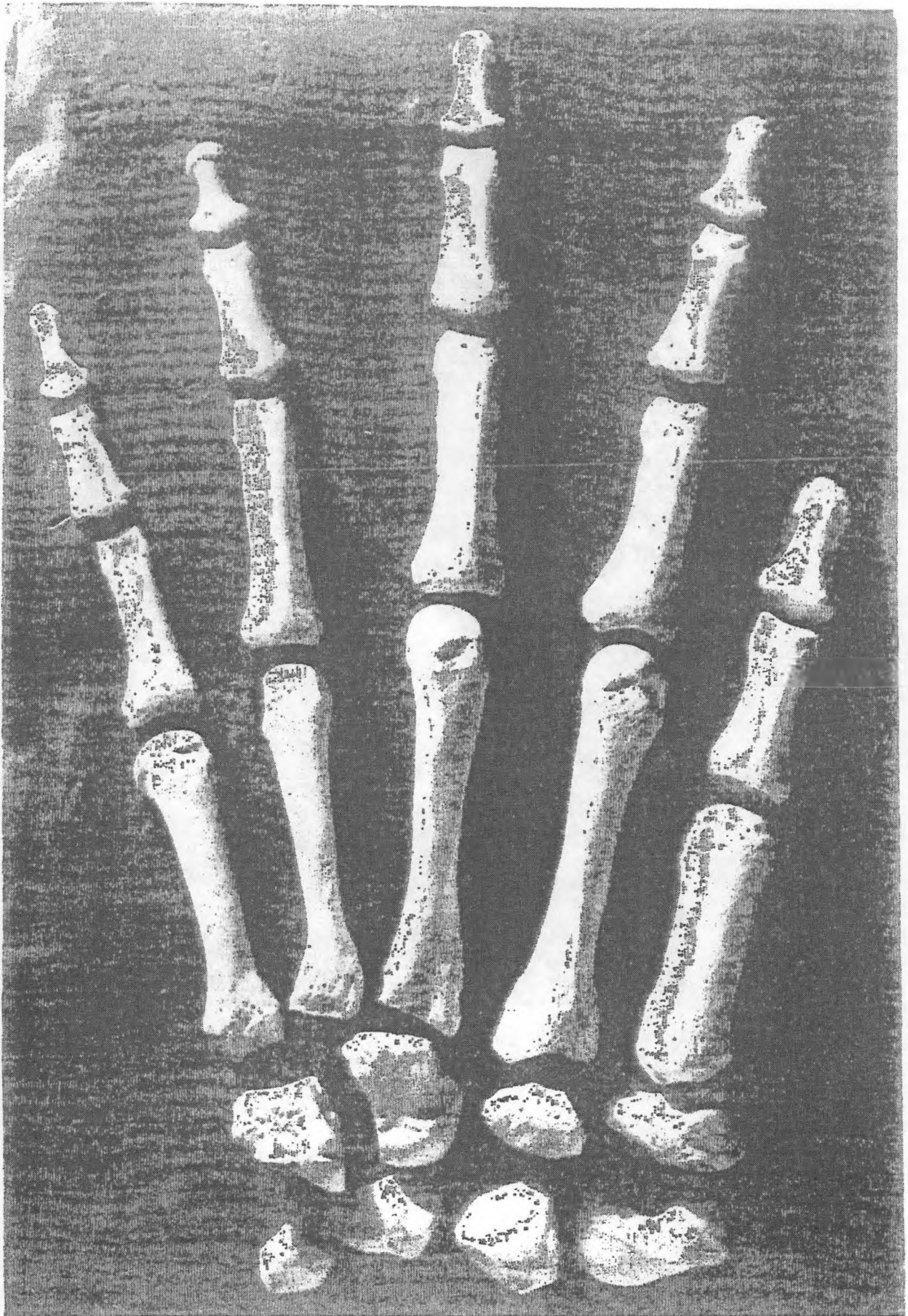


Figure 42. Wrist and hand bones (left, back).

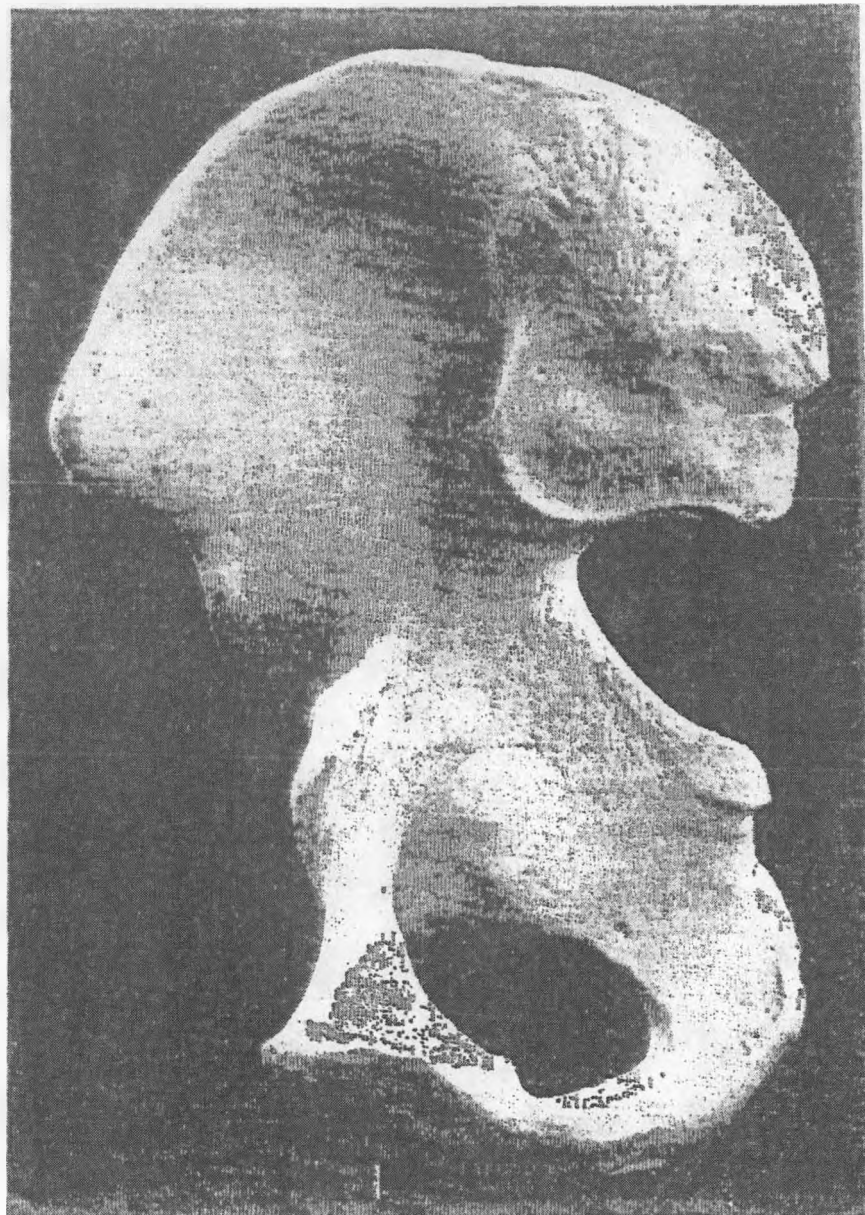
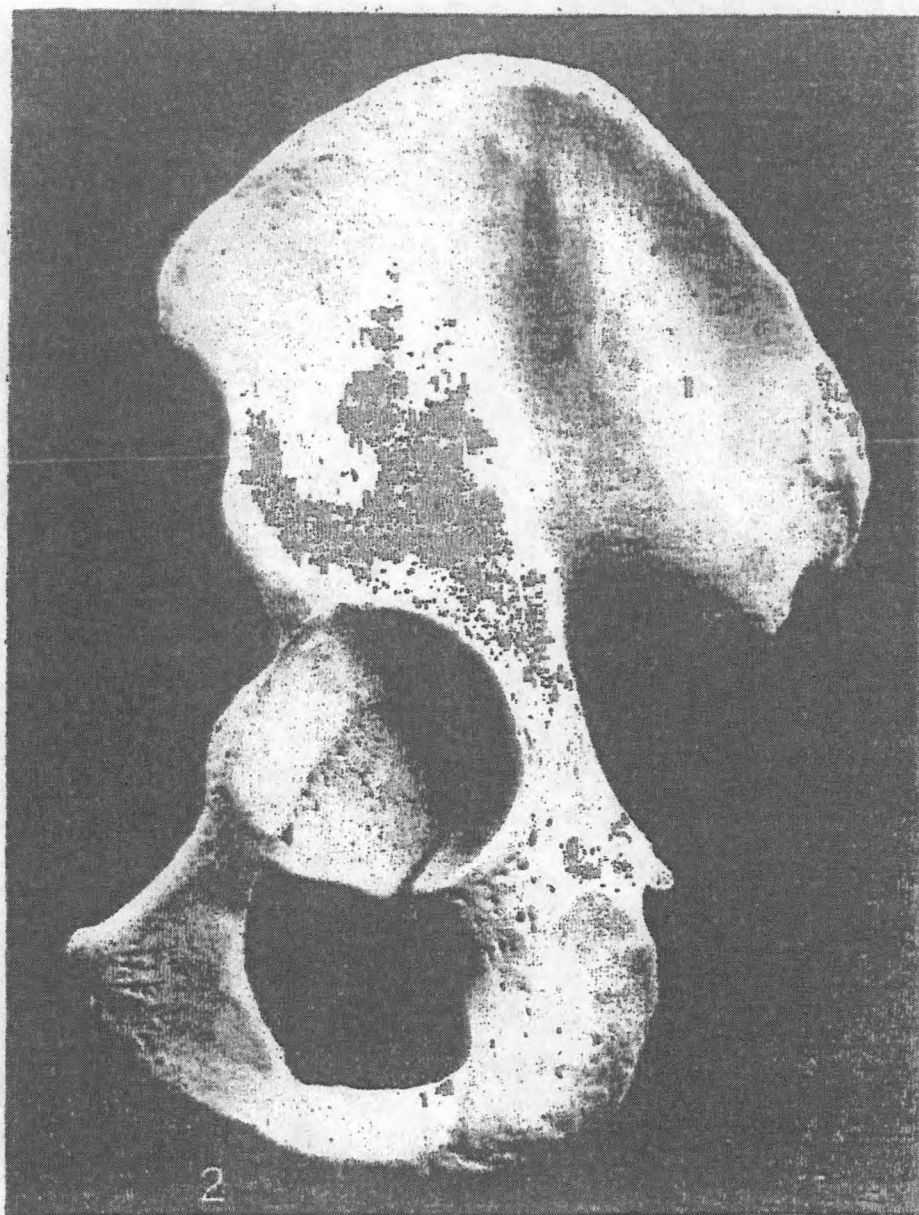


Figure 43. 1) Right innominate, internal view
2) Left innominate, external view



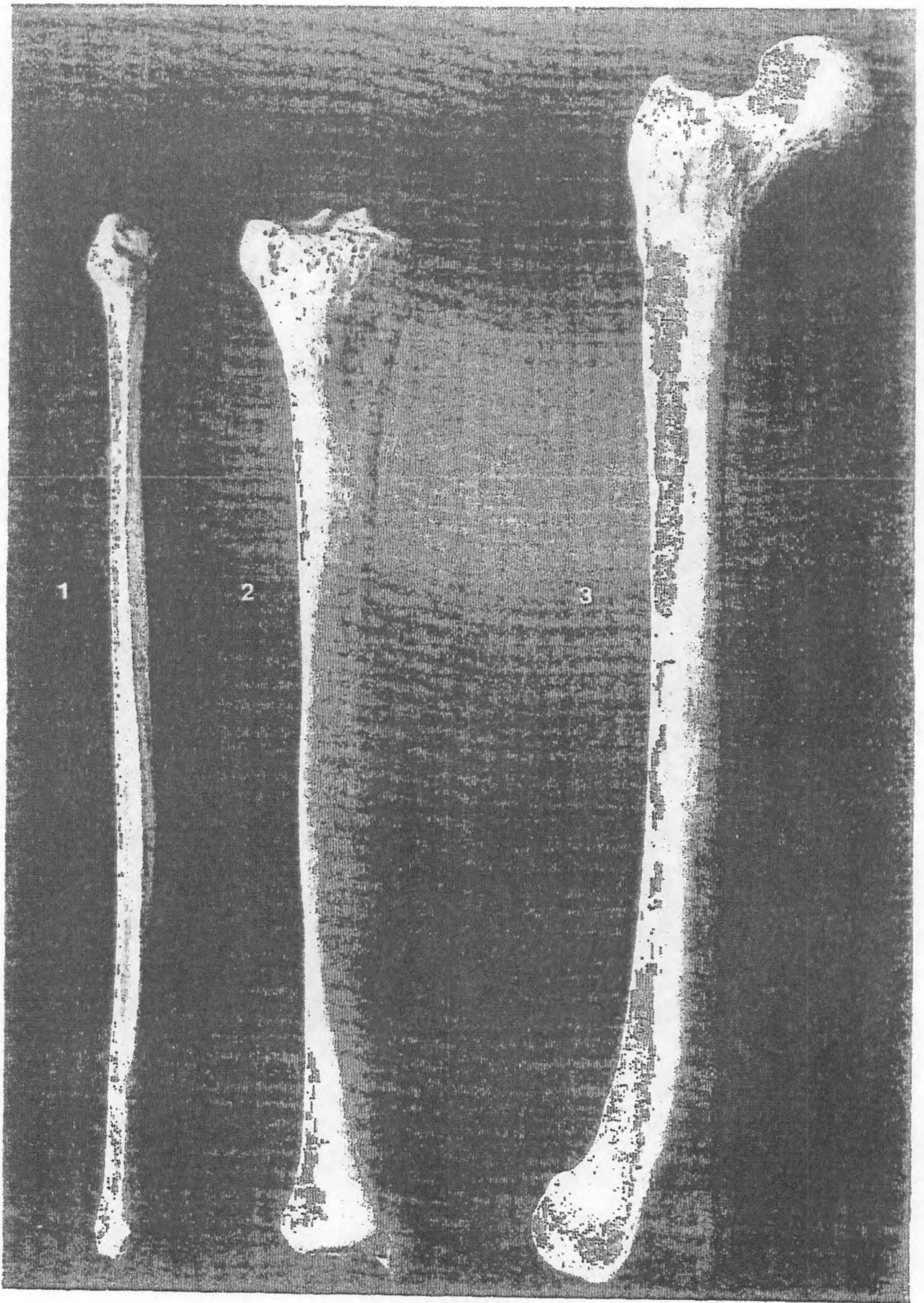


Figure 44. Leg bones: 1) fibula, 2) tibia, 3) femur (all front view).

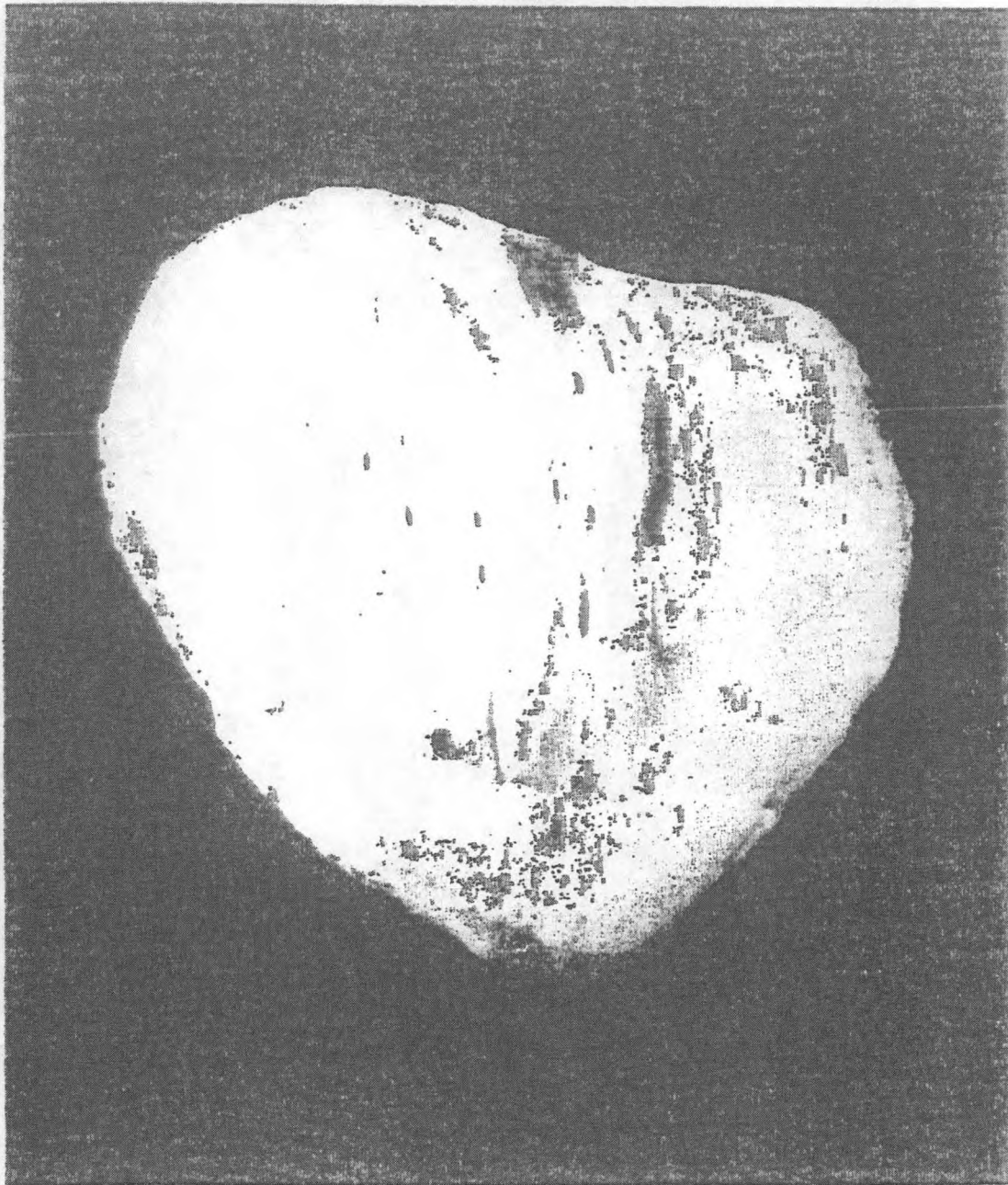
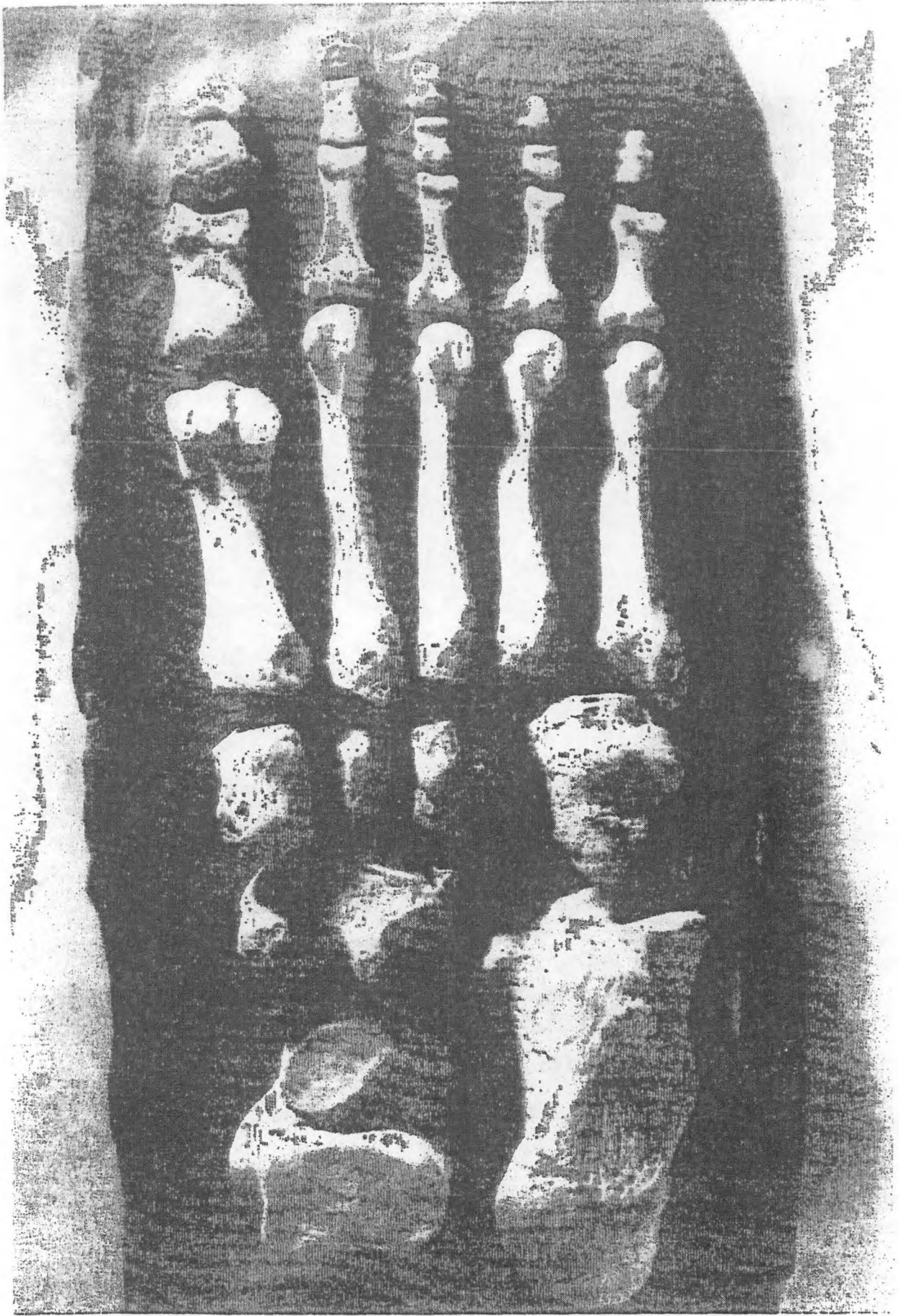


Figure 45. Patella (front view).

Figure 46. Following page: Ankle and foot bones (left, sole).





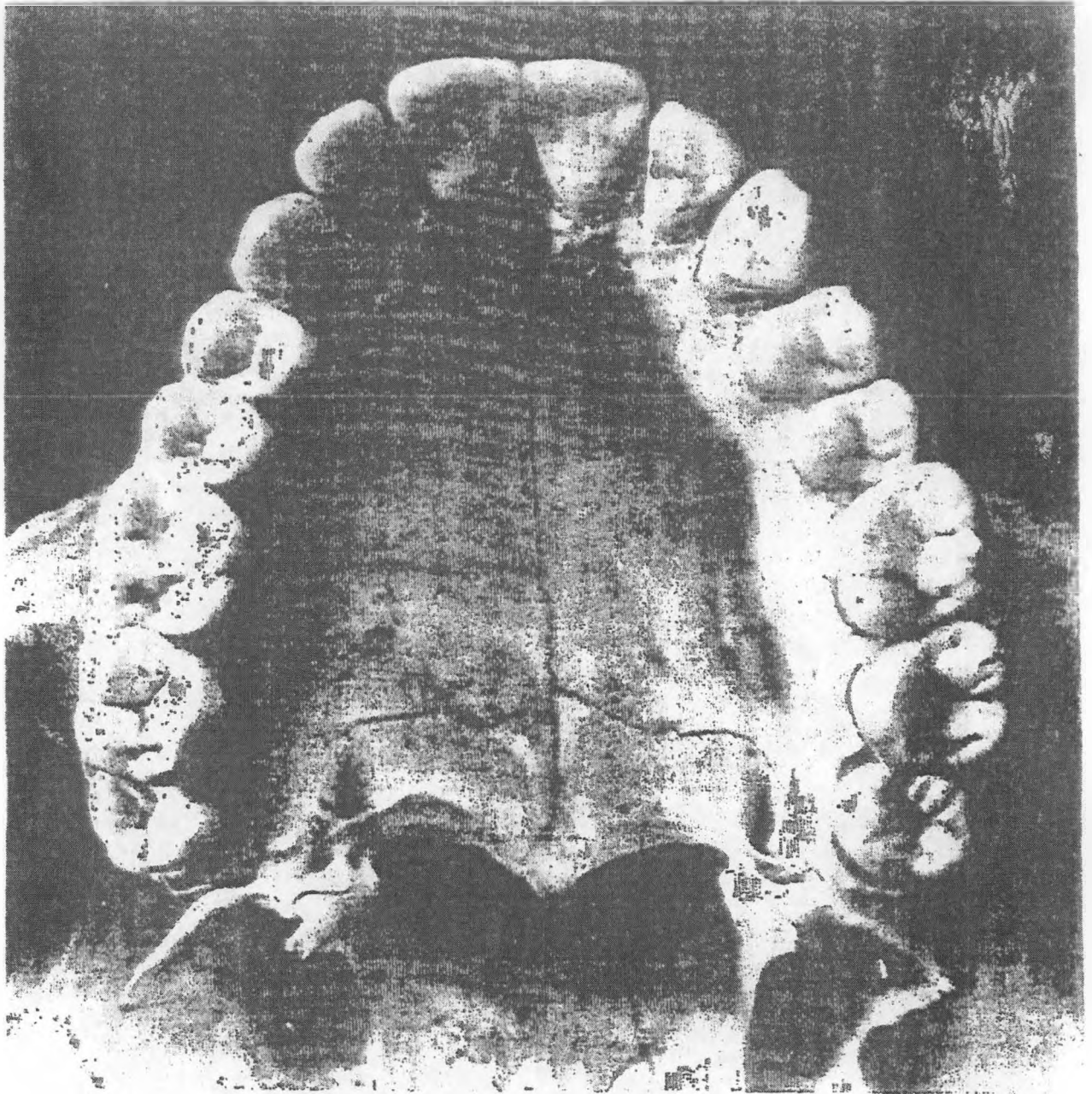


Figure 47. *Preceding page:* Ankle and foot bones (left, top).

Figure 48. *Above:* Maxillary adult dentition (occlusal view).

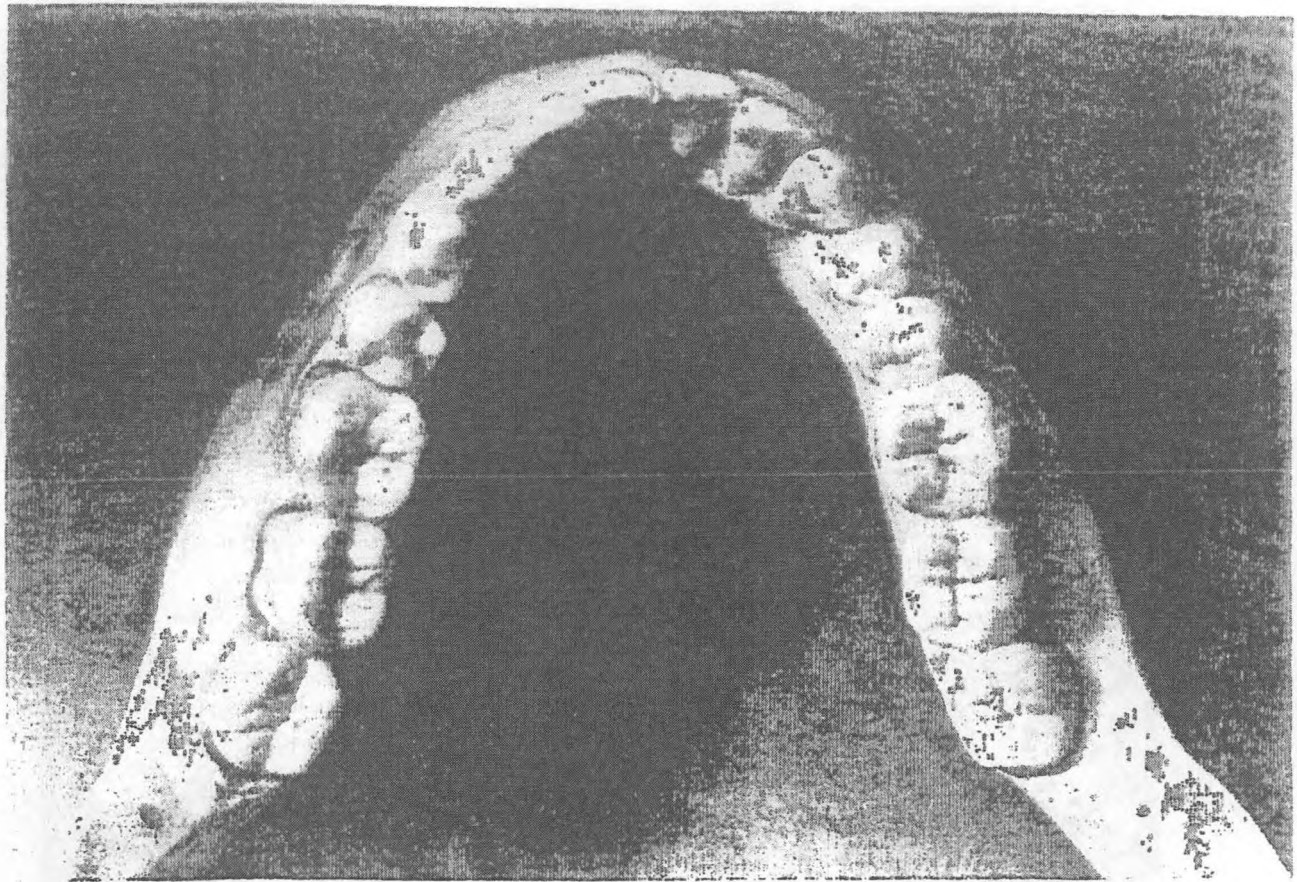


Figure 49. Mandibular adult dentition (occlusal view).

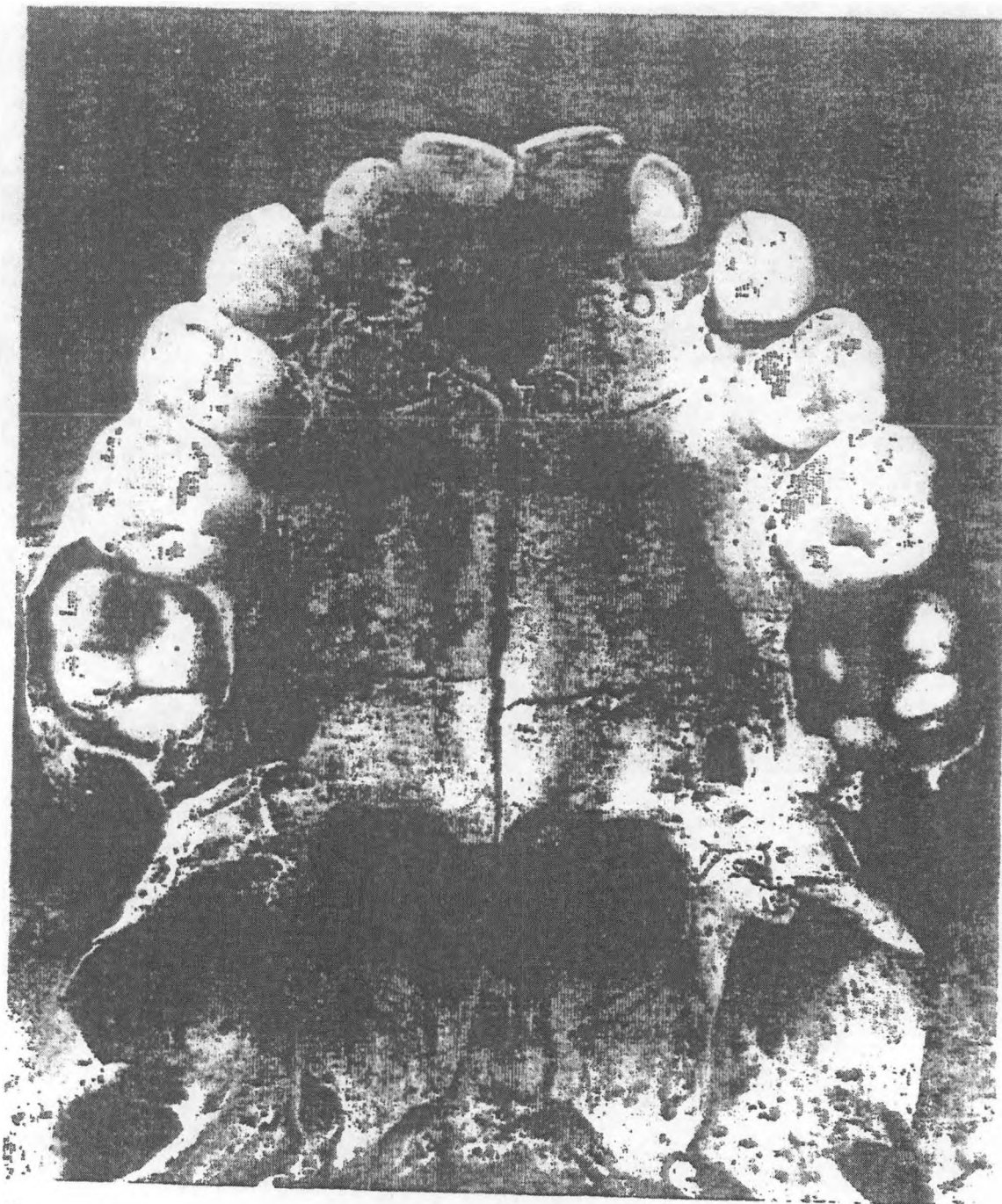


Figure 50. Maxillary milk dentition (occlusal view).

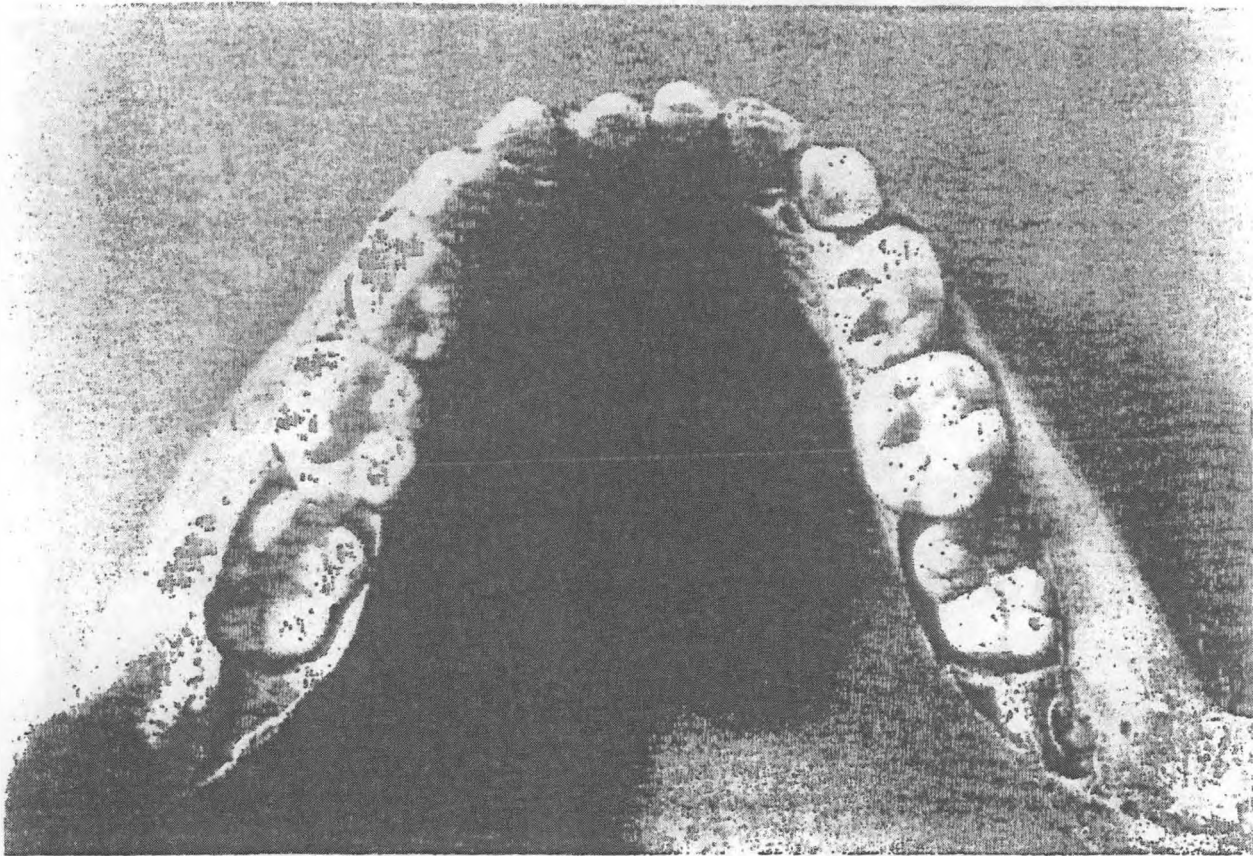


Figure 51. Mandibular milk dentition (occlusal view).

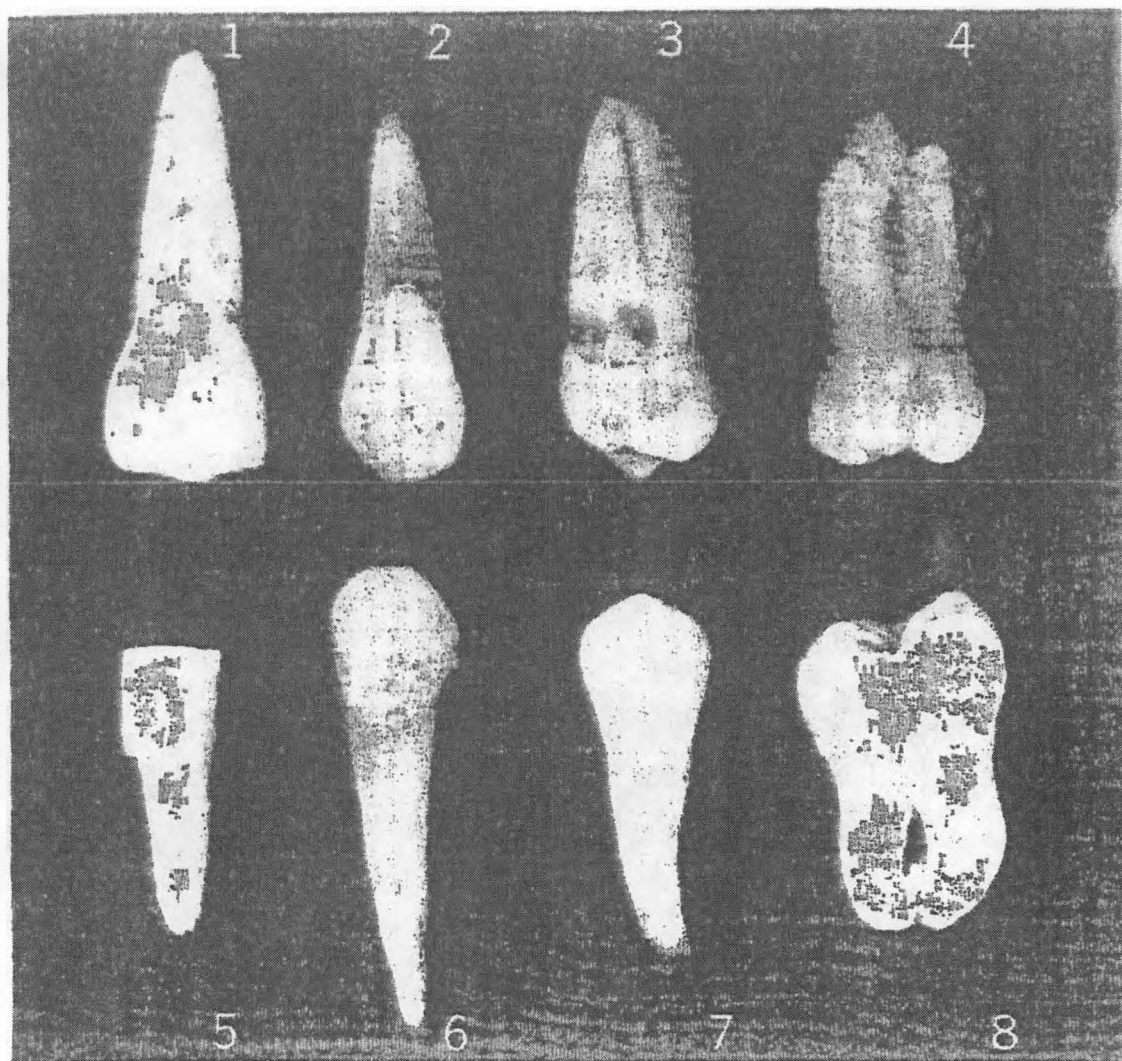


Figure 52. Representative adult teeth.
Maxillary: 1) incisor, 2) canine, 3) premolar,
4) molar.
Mandibular: 5) incisor, 6) canine, 7) premolar,
8) molar.

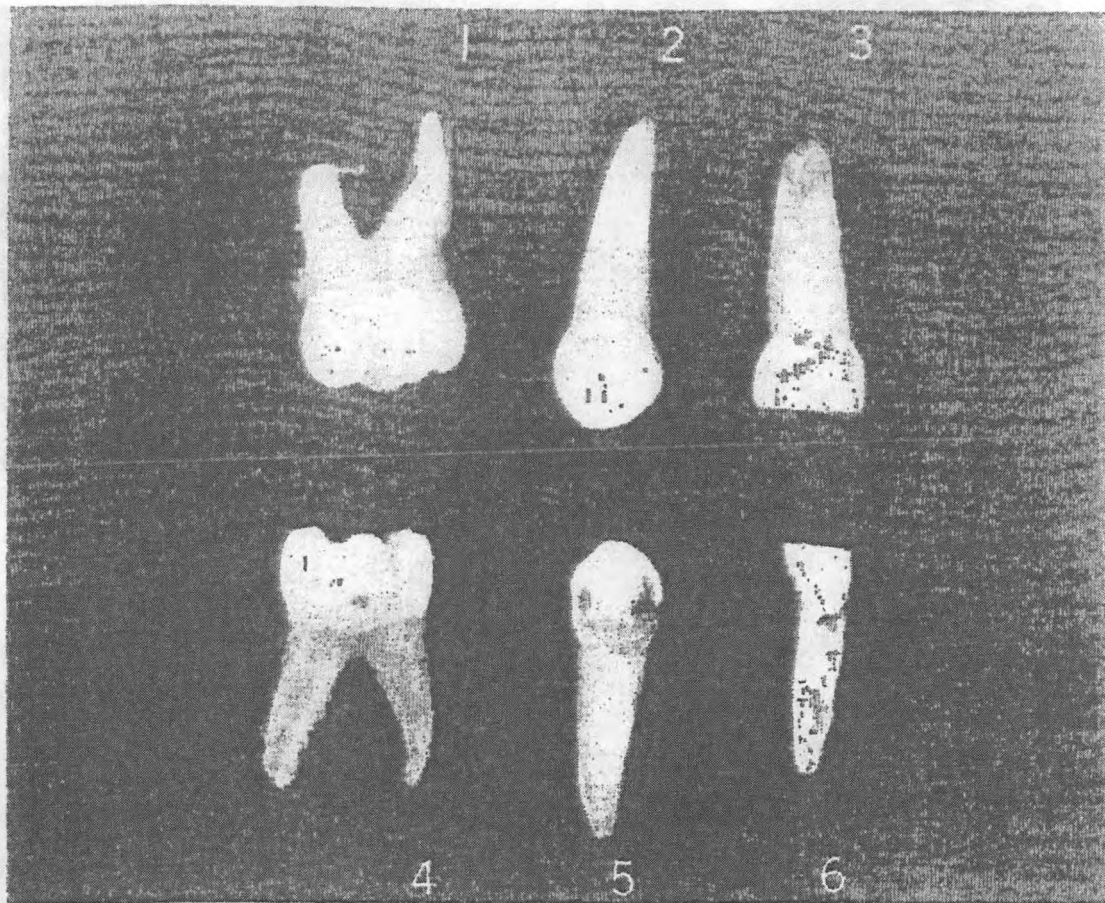


Figure 53. Representative milk (deciduous) teeth.
Maxillary: 1) molar, 2) canine, 3) incisor.
Mandibular: 4) molar, 5) canine, 6) incisor.

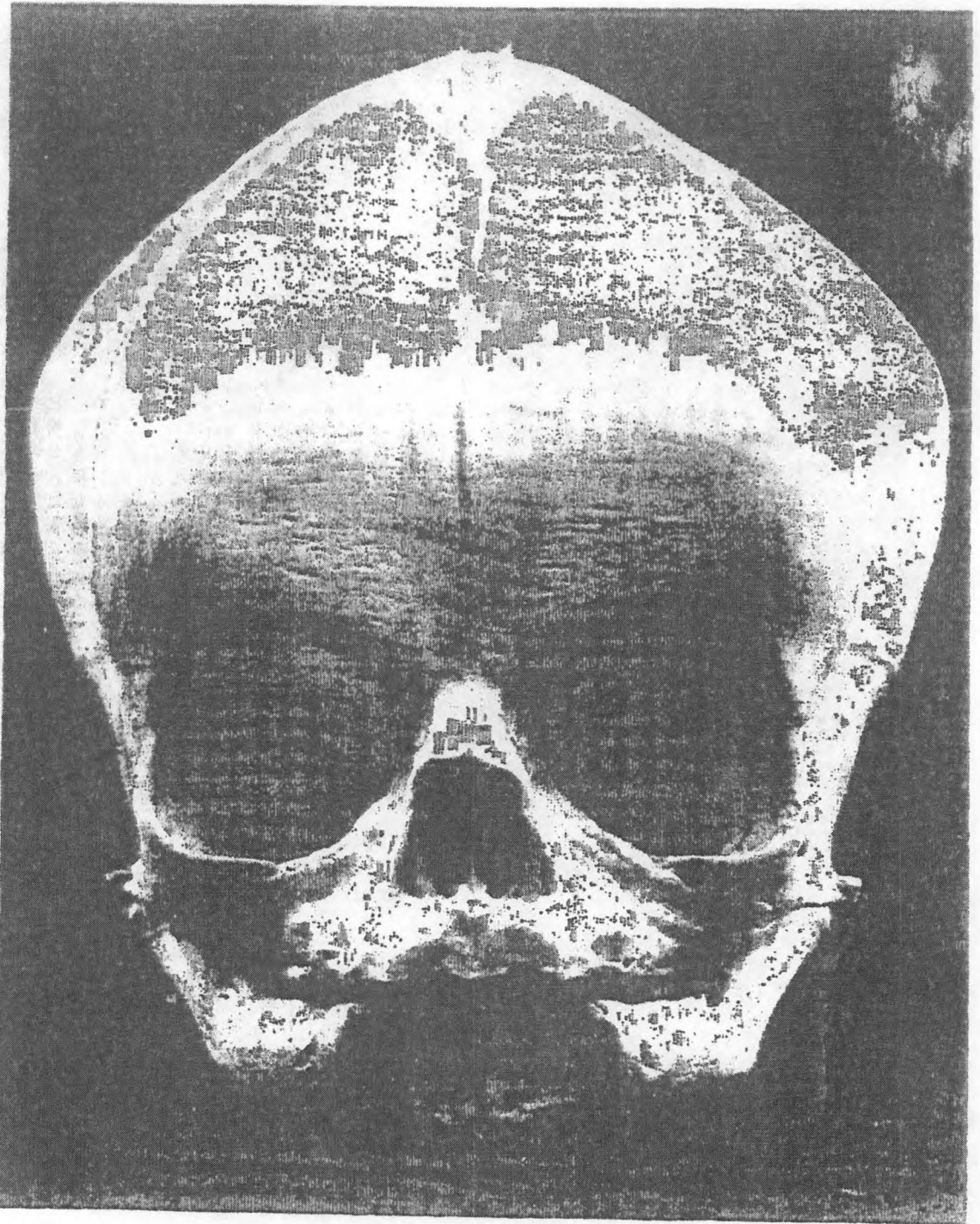


Figure 54. Fetal skull (circa 36 weeks, front view).

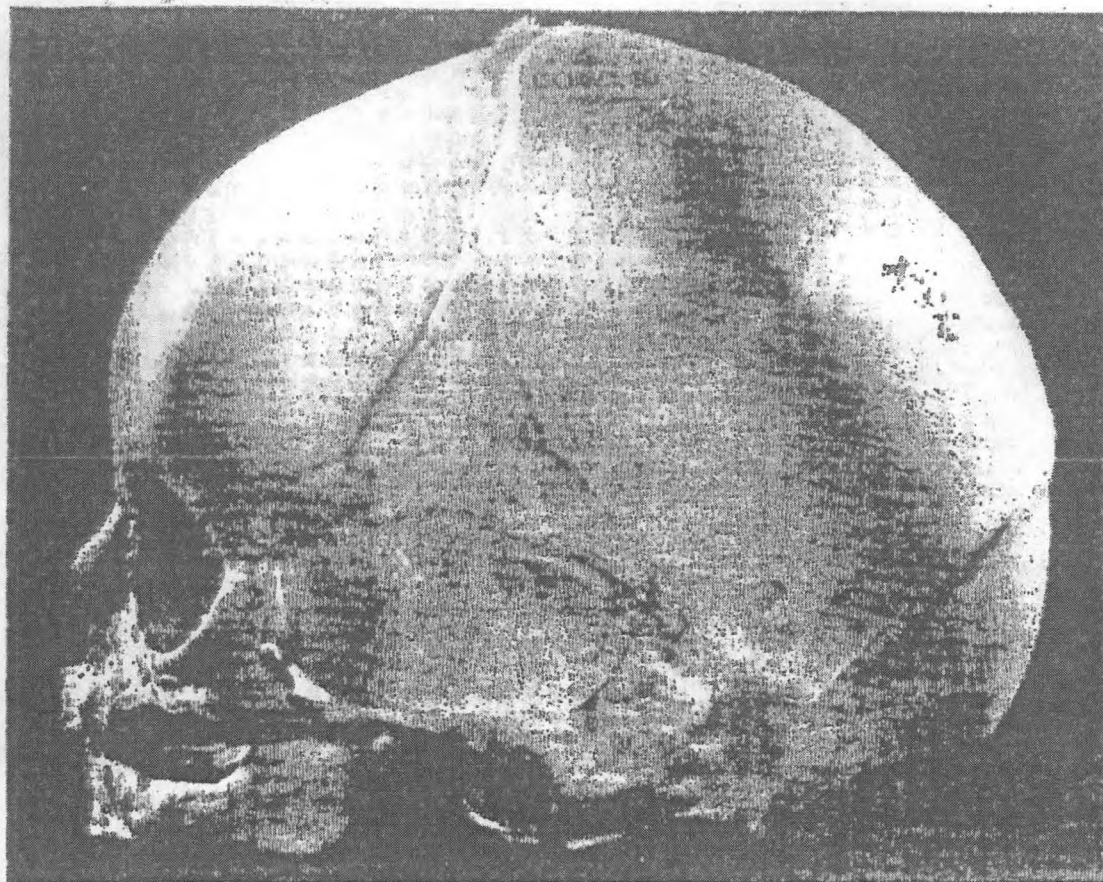


Figure 55. Fetal skull (circa 36 weeks, side view).

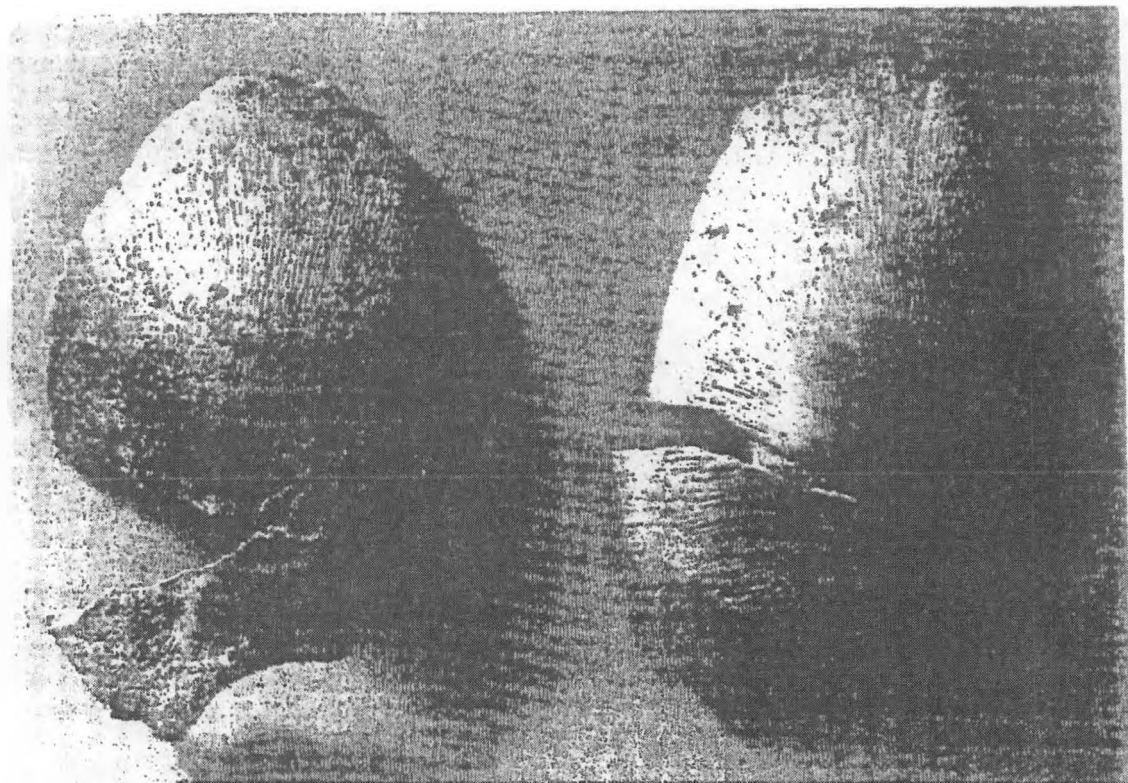


Figure 56. Fetal skull bones: frontals (circa 32 weeks).

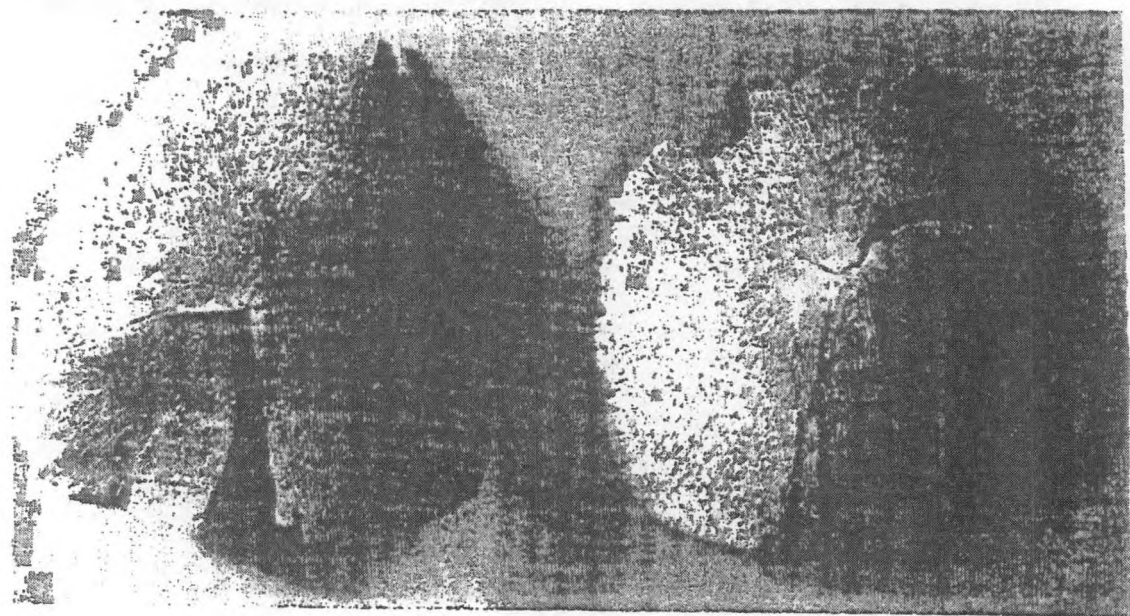


Figure 57. Fetal skull bones: parietals (circa 32 weeks).



Figure 58. Fetal skull bones: occipital. 1) squama, 2) basi-
occipital, 3) two exoccipitals (circa 32 weeks).

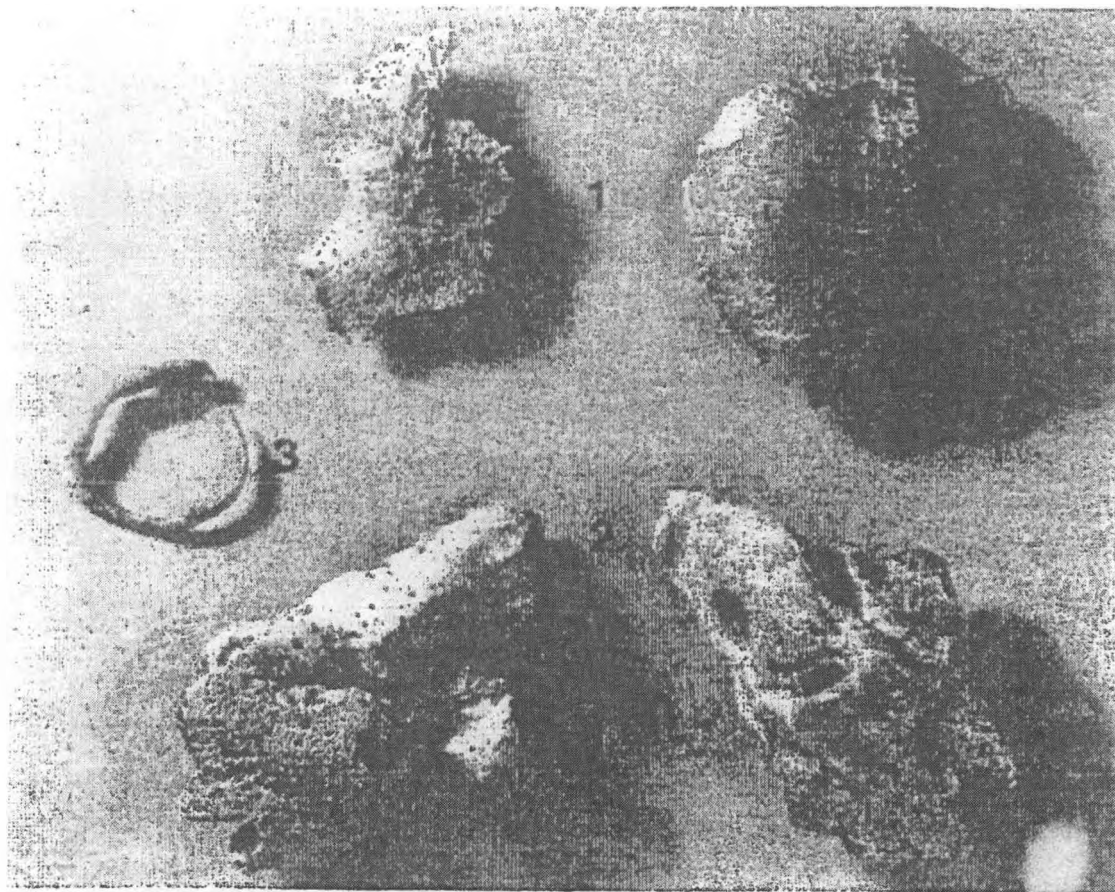


Figure 59. Fetal skull bones: temporal. 1) squamosal, 2) petrous, 3) annulus = tympanic ring (circa 32 weeks).

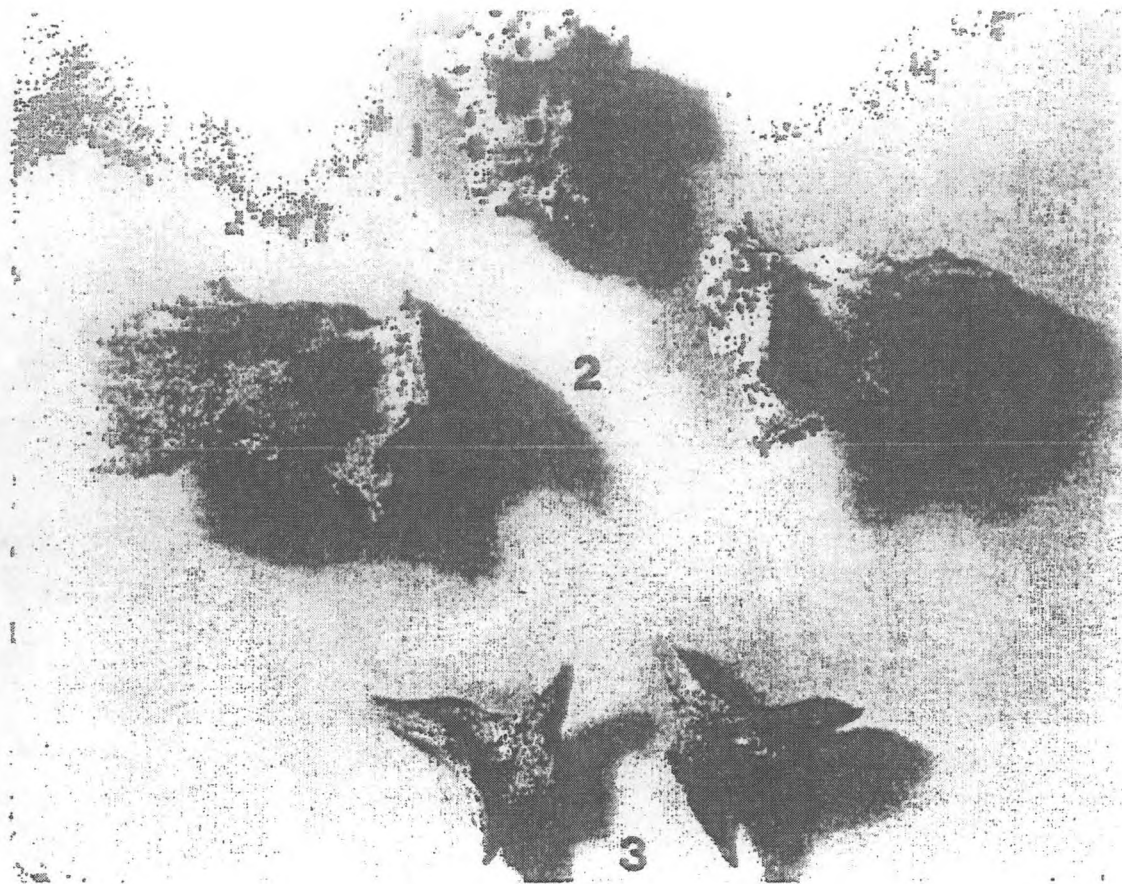


Figure 60. Fetal skull bones: sphenoid. 1) basisphenoid, 2) alisphenoids, 3) zygomae = cheek bones (circa 32 weeks).

192 FOUND! HUMAN REMAINS

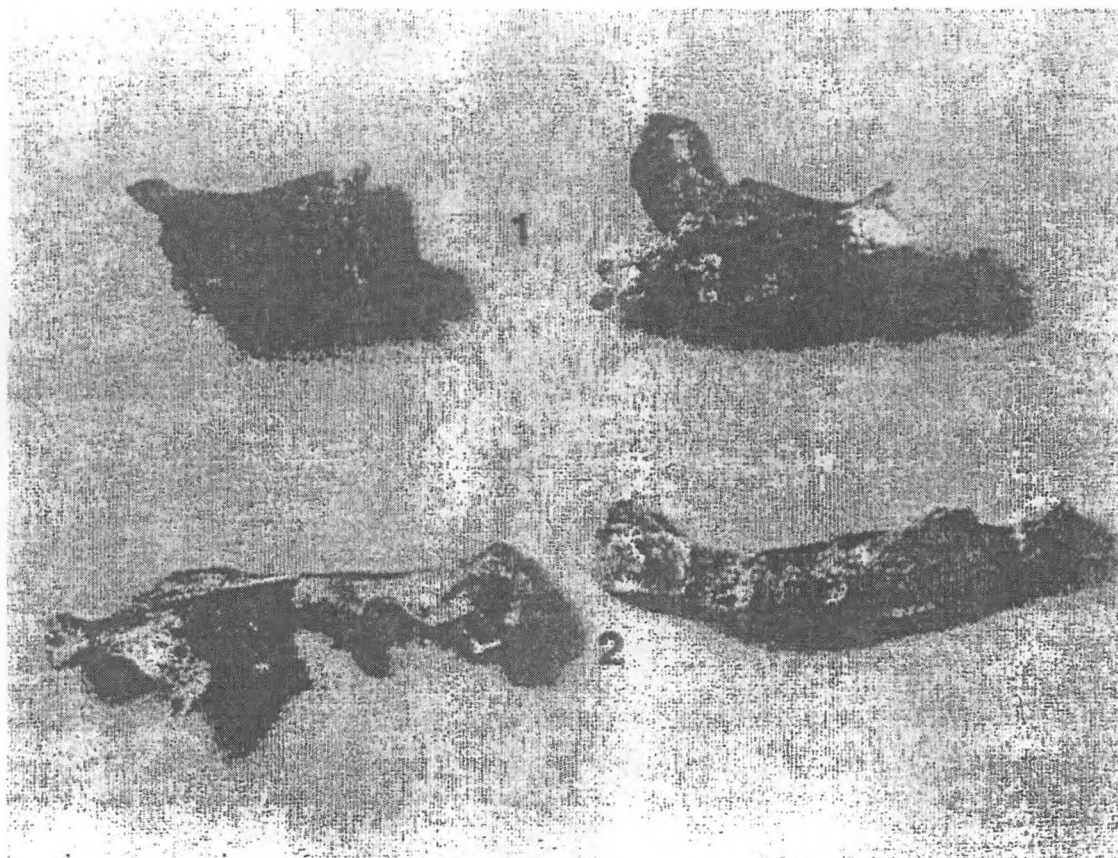


Figure 61. Fetal skull bones: right and left halves of 1) maxilla (upper jaw), and 2) mandible (lower jaw) (circa 32 weeks).