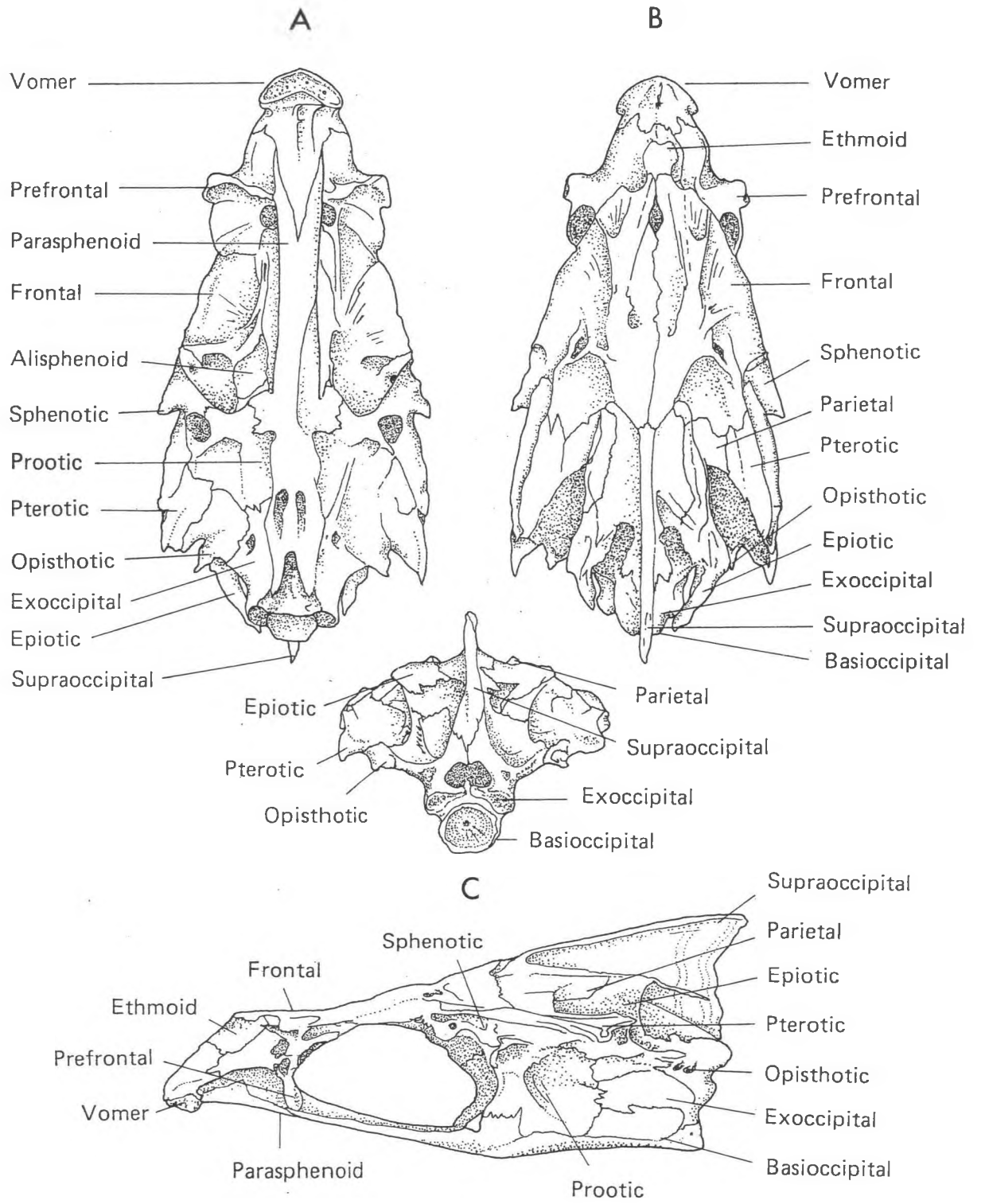


**INTRODUCTION TO THE GENERAL FISH SKELETON**

**THE CRANIUM - *Roccus saxatilis***

- A. Ventral
- B. Dorsal
- C. Posterior
- D. Left Lateral



*Roccus saxatilis*

THE CRANIUM

(after Starks 1901)

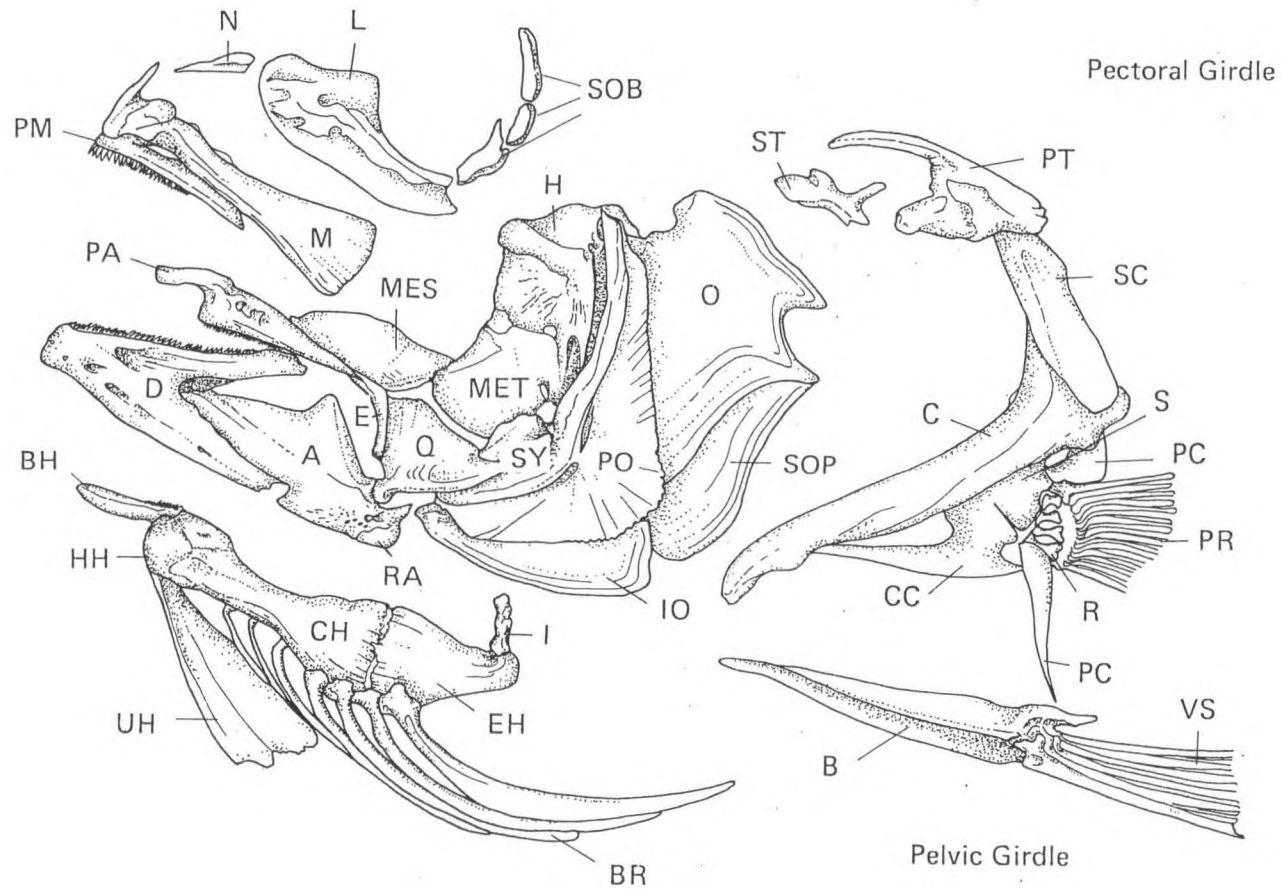
## THE LATERAL FACIAL BONES AND APPENDICULAR SKELETON

*Roccus saxatilis*

### KEY

A	Angular	N	Nasal
B	Basiptergium	O	Opercle
BH	Basihyal	PA	Palatine
BR	Branchiostegal Ray	PC	Postcleithrum
C	Cleithrum	PM	Premaxilla
CC	Coracoid	PO	Preopercle
CH	Ceratohyal	PR	Pectoral Ray
D	Dentary	PT	Posttemporal
E	Ectopterygoid	Q	Quadrate
EH	Epihyal	R	Radial
H	Hyomandibular	RA	Retroarticular
HH	Hypohyal	S	Scapula
I	Interhyal	SC	Supracleithrum
IO	Interopercle	SOB	Suborbital
L	Lachrymal	SOP	Subopercle
M	Maxilla	ST	Supratemporal
MES	Mesopterygoid	SY	Symplectic
MET	Metapterygoid	UH	Urohyal
		VS	Ventral Spine

Lateral Skull Bones



Pectoral Girdle

Pelvic Girdle

*Roccus saxatilis*

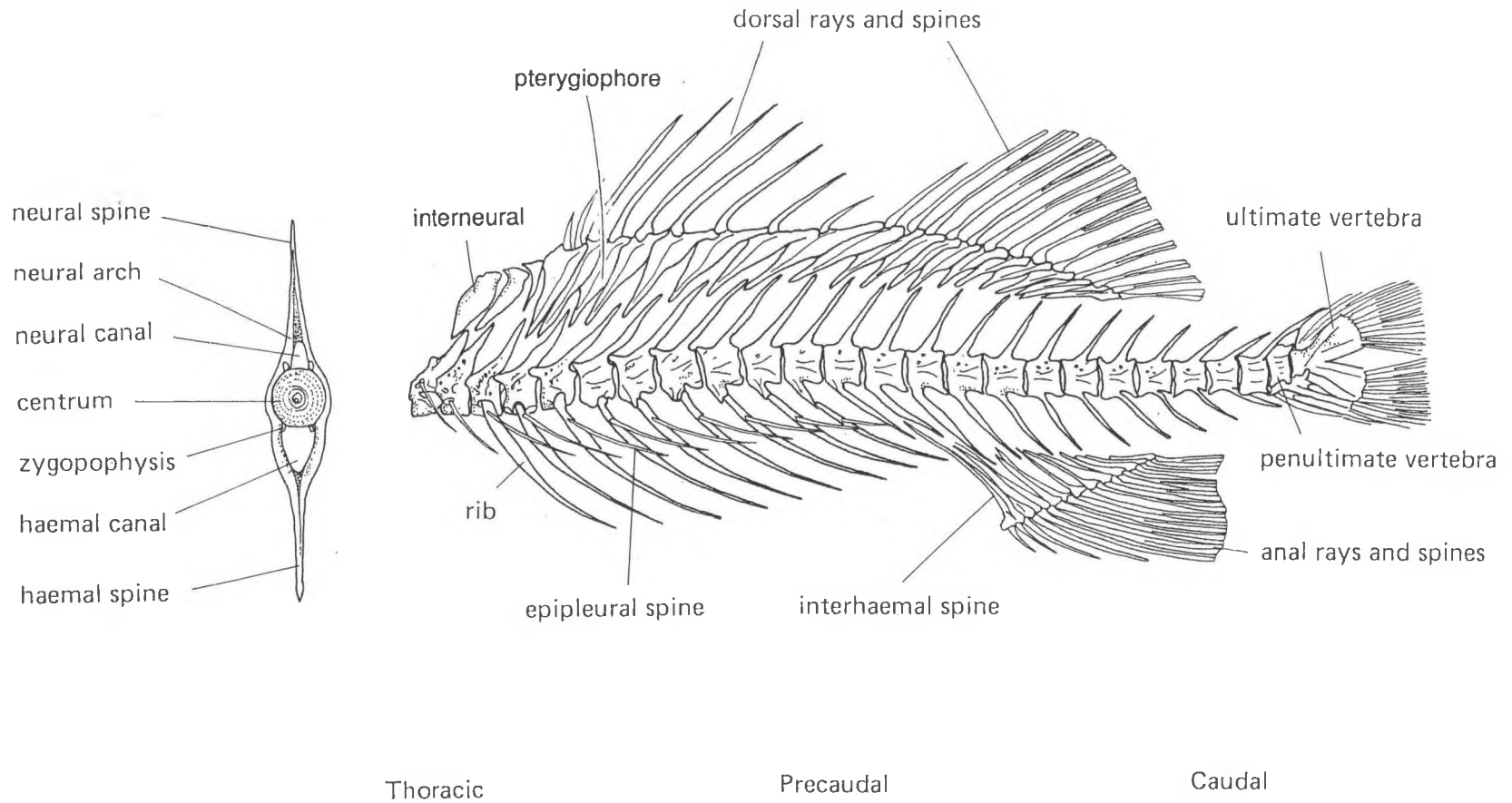
THE LATERAL FACIAL BONES AND APPENDICULAR SKELETON

(after Starks 1901)

**THE AXIAL SKELETON - *Roccus saxatilis***



THE AXIAL SKELETON



*Roccus saxatilis*

(after Starks 1901)

**KEY TO ELEMENT VIEW**

- L Lateral**
- M Mesial**
- A Anterior**
- P Posterior**
- D Dorsal**
- V Ventral**